

Helping Hands

2026

Resource Guide

for the Mature
Market in
the Greater
Wausau
Area

Do you want to move? Maybe downsize?
Or maybe a loved one needs to know
where they can get in-home care or where
they can go for a social meal?

You've come to the right place.

Helping Hands is here for you.



Rennes Group

Assisted Living, Memory Care,
Rehab & Skilled Nursing Services

Est. 1973

EXTRAORDINARY LIVES DESERVE EXCEPTIONAL CARE



Age doesn't define rules for the life we lead. It doesn't set a deadline for learning, engagement or experiences. At Rennes Group, age simply represents the extraordinary lives we're honored to care for every day.

We're guided by a promise to our residents, a commitment to deliver exceptional care focused upon dignity, respect and compassion that creates meaningful experiences and memories. We believe lifelong learning, new experiences and community engagement enhances our residents' lives.

We believe they deserve nothing less than exceptional.

Our community partnerships with local businesses delivers upon this promise through community engagement and life enrichment.

After all, our stories are still being written, and we're happy to help fill the pages.

www.rennesgroup.com

CONTACT US

Rennes Health & Rehab Center-Weston & Rhinelander
Renaissance by Rennes - Weston & WI Rapids

In 1973, the Rennes' began a company that shifted how seniors were cared for as their needs changed. Still run by family, Rennes believes we all have the desire to feel respected. We are your trusted partners in the continuum of care for senior living and are committed to the Rennes difference.

CONNECT
WITH US



NOW ACCEPTING ADMISSIONS TO OUR SHORT TERM REHAB PROGRAM!



Private Rooms & Bathrooms

Engaging Activities Program

Whether you or your loved one are considering **short-term, long-term or dementia care**, our talented teams have proven to deliver the best in skilled nursing care designed for you and your family.



Mount View
Care Center

715.848.4300 • Wausau
www.norcen.org/MVCC

Amazing Employees. Exceptional Care.

COME VISIT OUR BRAND NEW SKILLED NURSING FACILITY

Empowering Seniors to Prevent Healthcare Fraud



Protect
your personal information

Detect
suspected fraud, abuse,
and errors

Report
suspicious claims or
activities

Contact Senior Medicare Patrol | www.smpwi.org

888-818-2611



WisconsinSeniorMedicarePatrol

Call us with questions about
billing errors, scams, and
medical identity theft



SMP

Senior Medicare Patrol

Preventing Medicare Fraud

SMPs are grant-funded projects of the federal U.S. Department of Health and Human Services (HHS), U.S. Administration for Community Living (ACL).



Contents

Questions:
seniorreviewnewspapers@gmail.com
715-831-0325

Articles

- 7 **Need a Notary Public? I'll Come to You!**
- 9 **The Absolute Gift of Hospice**
- 15 **Tips to Spot and Avoid Social Security Scams**
- 18 **The Value of a Trusted SRES Real Estate Advisor**
- 24 **How to Get Your Affairs in Order**
- 29 **Ascend Funeral Home & Cremation Care:
A New, Compassionate Choice in Funeral
Care**

Directories

- 10 **Housing, Home Care, Hospice Care**
- 13 **Adult Family Homes**
- 16 **Food Pantry, Grocery Delivery, Mobile
Meals, and Meal Sites**
- 21 **Skilled Nursing**
- 22 **Adult Day Care**
- 23 **Funeral Homes, Monuments**

Charts

- 13 **Independent Living**
- 20 **Assisted Living**
- 21 **Skilled Nursing and Rehab**
- 27 **Adult Day Care**
- 28 **Home Care**

AKRE Enterprises assumes no responsibility for the advertising content of this resource directory nor for any mistakes or omissions there in. No endorsements of any products or services is made and none should be inferred. The terms and conditions under which the advertisement will be honored are the sole responsibility of the advertisers and not AKRE Enterprises. A telephone call to the advertising business may eliminate confusion. All content in this guide was up to date at the time of the printing. If there are errors in the listings or charts, please feel free to contact us to make corrections. The Helping Hands Resource Guide is owned by AKRE Enterprises. Copyright © 2026. For more information, or to advertise in the next Helping Hands Resource Guide call 715-831-0325 or visit our new website www.seniorreviewnewspapers.com.





📞 (715) 907-4610 📱

Fully Insured | Personal Care | 24/7 Availability

Affordable In-Home Care For Your Loved One
serenecaresolution.com

482603

We can help!



Start the New Year off *right*.
 Talk to someone about your gambling.
 Get Help!

Wisconsin Council on Problem Gambling
800-426-2535

Are High Energy Costs Getting You Down?



ENERGY SERVICES FOR MARATHON COUNTY may be able to help!

**2 Simple ways to apply for a
WHEAP Energy Assistance Grant!**

**Call 800-506-5596
Locally 715-842-3111**

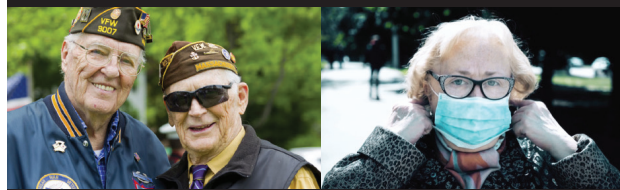
1

- For questions or to schedule an appointment.
- To complete a WHEAP application by phone with our experienced staff.

OR

2

You may now also apply
online at **HEAT.HELP**



**Don't Delay – Call Us Today at
Energy Services
FOR
Marathon County**

715-842-3111

401 N 5th St #443, Wausau, WI 54403

*Located inside the US Bank building. This site is fully accessible.



homeenergy+

Need a Notary Public? I'll Come to You!

By Josh Peterson, JTP Mobile Notary

I'm Josh Peterson with JTP Mobile Notary – What is it that I can do for you, you ask? If you or a loved one have a document you need notarized but cannot get to a bank or a notary because you are in one of the lovely facilities this book is placed in or for whatever reason you have, I will bring my notary supplies and expertise to you!



I will notarize wills & trusts, powers of attorney, advanced care directives, property deeds, affidavits of residence, etc. You will just need to have a current and valid photo ID for me to see and be able to provide any disinterested witnesses necessary depending on the type of document you want notarized.

I love my job and would do it for free if I won the lottery but since I don't play the lottery, I must charge a fee. I accept cash, checks, debit/credit cards.

Also, no, I am not an attorney so I cannot create a legal document for you or advise you on any document you might want notarized. I prefer not to get in trouble.

How is my fee determined? There are a few things that go into that: 1. The length of travel time it will take for me to get to you. 2. What type of document you

need notarized i.e., how many pages require a notarization – the answer to this is always \$5 per notarization stamp. For example, you have a document which requires one notary stamp, and you want only one original, that is \$5 for the notarization plus whatever is quoted for travel (I keep my travel fees as reasonable

as possible, nothing extra for nights or weekends). Additionally, if you have that same original document and want four originals made then the cost is \$20 plus whatever I quote you for travel and so on.

I will come to you when it's most convenient for you and the time allows for me, even on weekends and at night during my business hours, which makes my last appointment taken most nights at 7pm! Keep in mind I will be traveling from the Wisconsin Rapids area but also keep in mind that I don't mind traveling, it's why I chose this line of work!

When I started this business almost 11 years ago, I didn't know how much need there would be or how popular it would become, but it has become exceedingly popular, and my schedule is fluid and fills up quickly.

Call or text me at 715-256-7553. You can also email me at josh@jtpmobilenotary.net. Visit my website at www.jtpmobilenotary.com. I can't wait to meet you!

WE DRIVE TO YOU, SO YOU DON'T HAVE TO DRIVE AT ALL!

Serving Wisconsin Rapids & Surrounding Communities

**Deeds • Powers of Attorney • Real Estate Transactions
Signature Witnessing • And More!**

- ✓ Reasonable Rates ✓ Weekend Availability
- ✓ After Regular Business Hours Availability



Call or Text Josh Today!
715-256-7553

josh@jtpmobilenotary.net
jtpmobilenotary.com



DO YOU LIKE TO LISTEN TO PODCASTS?

Do you want to know more about dementia and the research that is happening at the University of Wisconsin – Madison. If so, check out Dementia Matters with Dr. Chin. You can listen on podbean, spotify or iTunes.



Plan your memorial. Preserve your legacy.

Planning your memorial in advance ensures you are remembered exactly the way you want. Decisions you make today will reduce the emotional and financial strain your family experiences in their grief.

**Plan ahead.
It's what's best
for everybody.**

*A lasting
tribute to life*

**SERVING YOU
AT TWO
LOCATIONS!**

1915 Baker Drive,
Wisconsin Rapids
715-423-2370

2332 Main Street,
Stevens Point
715-344-6577

**Haertel
Monuments**

haertelmonuments.com



**HOUGUM
LAW FIRM, LLC**
ESTATE PLANNING & ELDER LAW

REDUCE THE STRESS OF LONG-TERM CARE COSTS

We are committed to personal service for each client.

- Estate Planning
- Asset Protection
- Revocable Trusts
- Wills • Probate
- Trust Administration
- Nursing Home / Medicaid Qualification



CALL TODAY TO SCHEDULE YOUR APPOINTMENT!

THREE LOCATIONS:

Offices in Wausau, Rhinelander and Plover
715.843.5001

WWW.HOUGUMLAW.COM



TLC
Home Care

**A+ RATING FROM BBB
26 YEARS IN BUSINESS
LOCALLY OWNED AND OPERATED**

- Truly affordable in-home care
- Companionship
- Ambulation
- Meal planning and preparation
- Light housekeeping and planning
- Shopping & errands
- Personal care (bathing and dressing)
- Respite care to relieve primary caregiver
- Medication Reminders
- Service available 24/7, 365 days per year
- Insured & bonded

Our skilled, compassionate caregivers provide non-medical, supportive home care, assisting our clients in the comforts of their own homes.

*Peace of mind of knowing your
loved one is in the best care*



For **FREE** consultation call **715.355.5673** | tlchomecarewi.com

The Absolute Gift of Hospice

by Kristi Gay, freelance writer

Before I became personally involved with Hospice and didn't know much about it, I only shuddered with dismay when I heard someone "is on Hospice" knowing it meant death was around the corner. Death and talk of death was scary and something I completely

avoided. However, that was before I BECAME OBSESSED with the angels that are part of Hospice, where now I light up like Clark Griswold's Christmas-lit-house when I hear someone GETS Hospice care. As my dad used to say, "the only certainty in this life is death" which seemed pessimistic before, but it really is true, death is just part of life. However, the road to death can be made so beautiful, peaceful, and filled with love thanks to two things: Hospice and Faith. My dad's final month was all of these things, and I've even described it as magical, which seems impossible given the circumstances.

I'll do a quick runthrough of all the things Hospice can offer that delighted us as my dad was a joyful participant of Hospice care for a month in January 2020: home visits from the nurse that included a fix for every new symptom plus giving us reassurance that everything is normal and what to expect next (this is huge!). Someone came to give him massages, someone came to sing, someone came to pray, someone came to counsel both from a faith standpoint, and someone else from a therapist standpoint. Two other options that my elderly friend took advantage of when she was in Hospice was virtual reality where someone



comes and straps on a VR headset and can choose a location that you want to explore that you hadn't had time to visit: ancient Egypt, the Grand Canyon, the Redwood Forest, or many other locations. You can have a weekly visitor, which I became

as a Hospice volunteer after finding out how awesome it is, to just visit without any special talents like these listed, but just as a friend to talk about whatever the patient wants to talk about. And finally, the thing that was really great for the family is that Hospice stays around and gives support for a YEAR after your loved one passes, offering grief counseling or check-ins. This brings a lot of comfort to the patient who is worrying about who they're leaving behind but also to the family who is in full-on caregiver mode and then feels lost and aimless when the person is gone.

When someone is given a terminal diagnosis, just like every struggle in life, there are two options: fight it or embrace the best parts of it. Hospice allows the exit from this life to be full of grace. The Hospice nurses are there for not only the patient but the family or caregivers, to help all of us and guide us. No one wants to be an expert at death, but because it is a certainty, why not take all the help, comfort, and peace that these experts have to offer! Hospice is no longer something I fear, it's the biggest benefit one can get when they are faced with the end of life on this earth.

Directory

Living Options

* CBRF

*Community Based
Residential Facilities—
Advanced Age Only*

Applegate Reflections
715-849-1514
applegateterracehs.com

Bell Tower
715-536-5575

**Bissell Street Community
Residence**
715-675-4252

Cady Home West I
715-675-5487

Cady Home West II
715-675-5726

Care Partners - Weston
715-355-0322/715-298-1688

Cedar Creek Manor I & II
715-355-8246/715-241-8807

**Chadwick Street
Community Residence**
715-355-7759

Crisis CBRF
715-848-4355

Dimensions Living
715-355-0812
dimensionsliving.com

**Evergreen Park/
Oak Heights**
715-903-0177

Homme Home of Wittenberg
715-253-2125
homme.org

**Mountain Terrace Senior
Living**
715-843-5230
mountainterraceliving.com

Northland House
715-845-4898

Our House
Assisted Care: 715-675-4444
Memory Care: 715-675-4440
ourhousesl.com

Pine Meadows
Schofield 715-355-6170
Mosinee 715-693-7024
pinemeadowsal.com

**Platinum Communities
Assisted Living of Schofield**
715-298-0218

**Platinum Communities
Assisted Living of Marathon**
715-443-2727

**Platinum Communities
Memory Care of Schofield**
715-355-0586

Pride TLC Assited Living
715-298-3833
pridetlc.com

Pride TLC Memory Care
715-241-8448
pridetlc.com

Serenity Villa
262-644-1101
serenityvillaal.com

Spring Crest Residence
715-298-3101

Stone Crest Residence
715-849-9563
homme.org

**Stoney River Memory
Care Weston**
715-241-8448

Sunshine Home of Wausau
715-848-8868
sunshinehomeofwausau.com

**Sylvan Crossings on
Evergreen**
715-675-3827
sylvancrossings.com

Traditions at Cedar Ridge
Weston: 715-355-6170
Mosinee: 715-693-7024

**Wellington Place of
Rib Mountain**
715-842-5000
carriagehealthcare.com

Willow Haven CBRF LLC
715-693-8233

* RCAC

*Residential Care
Apartment Complexes*

**Acorn Hill Senior Living
Community**
715-693-8844
acorn-hill.net

Applegate Terrace
715-849-1514
applegateterracehs.com

Gardens Apartments
715-845-1214
www.homme.org

**Mountain Terrace Senior
Living**
715-848-6257
mountainterraceliving.com

Primrose Retirement
715-842-1818
primroseretirement.com

Renaissance Weston
715-355-5858
www.rennesgroup.com

Riverview Terrace
715-261-6687
riverviewterrace.com

**Terrace Court Assisted
Living**
715-843-5230

* Home Care

*** Non-Medical Services*

A1 Home Health Care
715-359-8160/715-432-0911

Aldin Adult Home Care
715-573-1978

Ascension at Home
715-204-3440
ascensionathome.com

Aspirus At Home
715-847-2600
aspirus.org/ourservices

Elders Sanctuary, LLC
715-302-0773

**Faith in Action of
Marathon County, Inc.**
715-848-8783
faithinactionmarathoncounty.org

Home Instead Senior Care**
715-843-7100
homeinstead.com/293

Inspired Home Care, LLC
715-848-0480
myinspiredhomecare.com

Inner Peace Home Care Services, LLC
715-432-2114
innerpeacehomecare.com

Interim HealthCare
715-842-7707
interimhealthcare.com/
wausauwi

Kindhearted Home Care
(Serving Lincoln County Only)
715-218-3772
kindheartedhomecare.com

Nicolet Supportive Home Care**
715-843-9396
nicoletstaffing.com

Pastika Independent Living Services, LLC
715-297-3999

Serene Care Solutions, Inc.
715-907-4610
serenecaresolution.com

Sound Health Home Care
715-219-2070
soundhealthhomecare.com

TLC HomeCare for Seniors**
715-355-5673
tlchomecarewi.com

Universal Home Care
715-298-9307
uhhci.com

* Independent Senior Housing

Birchwood Highlands
715-359-7000
HighlandsCommunities.com

Casa Therese Schofield Apartments
715-571-5309

Cedar Creek Senior Housing I & II
715-241-7601

City Walk Senior Apartments
1-877-377-1434 or
rentals@capmail.org

Colby Cottages/Colby-Abbotsford Senior Village
1-877-377-1434 or
rentals@capmail.org

Forest Park Village
715-845-1214
homme.org

Island Place Apartments
715-848-1369
wardrents.com/property/
island-place-apartments/

Kannenberg Plaza
715-675-7952
kannenbergplaza.com

The Pines at Mount View
715-305-1516
horizonseniorhousing.com

Village Cooperative of Wausau
715-675-0287

* Subsidized Housing

55 and Older

Alvin O'Konski Manor
715-351-9357
impactseven.org

Cedarwood Apartments
715-443-0036
wisconsinmanagement.com

Donald Sykes Villa
715-314-1106
impactseven.org

Harry & Velma Hamilton Villa
715-351-9357
impactseven.org

Kannenberg Plaza
715-675-7952
kannenbergplaza.com

Maplewood Apartments
715-443-0036
wisconsinmanagement.com

Parkview Court
715-443-0036
wisconsinmanagement.com

Pinewood Apartments
715-443-0036
wisconsinmanagement.com

Riverview Towers
715-203-4032

Rothschild Apartments
715-443-0036
wisconsinmanagement.com

Schofield Apartments
715-443-0036
wisconsinmanagement.com

Sturgeon Bluff Apartments
715-848-7200

* Hospice

Aspirus Comfort Care & Hospice Services
715-847-2424
aspirus.org/ourservices

Compassus – Hospice Services
800-398-1297
compassus.com

Heartland Hospice
888-436-8482
gentivahs.com

Hospice House-Aspirus
715-847-2725
aspirus.org/ourservices

Interim Hospice & Palliative Care
715-842-7707
interimhealthcare.com

❖ Senior Apartments For Rent ❖

The Marathon Housing Association is accepting applications for efficiency, 1- & 2-bedroom apartments

Eligible applicants are 55+ years or disabled.

Apartments located in:

ATHENS | COLBY | EDGAR | MARATHON CITY | MOSINEE
ROTHSCHILD | SCHOFIELD | SPENCER | STRATFORD

Amenities include:

- Updated Kitchens
- Updated Flooring
- Updated Appliances
- Updated Windows
- Walk-in Showers
- Dishwasher & A/C
- Maintenance Staff
- Community Rooms
- Off-Street Parking

Rental
assistance
available at
select
properties.

**Wisconsin
Management Co., Inc.**

A better way...of living!



WMC is an equal opportunity
provider and employer.

**Call
715-443-0036
for applications!**

* Adult Family Home

Advanced Age, Dementia/Alzheimer's Care Only

28th Street LLC
Wausau, 715-298-0239

A New Vision AF LLC
Wausau, 715-298-9488

Aurora Residential Alternatives
715-359-2879
auroraservices.com

Autumn Lane Family Care
Biramwood, 715-449-3444

Birchwood
Wausau, 715-842-8700

Blaser Adult Family Home
Wausau, 715-842-4663

Circle of Love Haven 1-4
Weston, 715-35-2689
www.circleofloveafh.com

Eagles View
Wausau, 715-842-8700

Embers
Wausau, 715-842-8700

Everest Housing, LLC
Schofield, 715-298-1045

Fern Cottage
Wausau, 715-842-5408

Goldenrod Adult Family Home
Wausau, 715-355-5595
High Medical Needs

Hamilton House
Wausau, 715-571-2092

New Beginnings Adult Family Home
Wausau, 715-848-1938

Prospect Place
Wausau, 715-848-0006

REM Northwestern
Wausau, 608-327-5945

Reynolds Place
Wausau, 715-842-1154

Sekara LLC 1
Wausau, 715-355-3751
sekarallc.com

Sekara LLC 2
Wausau, 715-845-3170
sekarallc.com

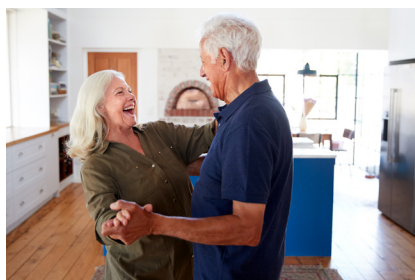
St. Rita LLC 575 / 577
Mosinee, 715-693-6768

This Home
Rothschild, 715-359-1031

Independent Living

	Subsidized	Public or Private Transportation	Pets Allowed	Beauty/ Barber Shop	Dining Facilities	Elevator to All Floors	Storage	Entertainment	Parking/Garage	Religious Services
Marathon Housing Association-WI Mgmt Co 715-443-0036	Yes	Public	Yes	No	No	Yes	Yes	Yes	Yes	No
Riverview Terrace 715-261-6687	Yes	Public	Yes	Yes	Yes	Yes	Yes	Yes	Yes	Yes
Riverview Towers 715-261-6687	Yes-HUD	Public	Yes	Yes	Yes	Yes	Yes	Yes	Yes	Yes
Village Cooperative of Wausau 715-675-0287	No	Public	Yes	No	No	Yes	Yes	Yes	Yes	No

The Helping Hands Guide does its best to put together the most accurate information for these listings. Because business services change and prices vary throughout the year, we recommend that you call any business you are interested in getting information from before making any decisions. We tried our best to gather all of the information from each company and to the best of our ability is up-to-date as of January 2026.



GOVERNMENT SUBSIDIZED HOUSING

across Wood, Marathon, Taylor & Clark Counties

Duane Flogstad Villa **715-496-1245**

2710 12th St S, Wisconsin Rapids
Physically disabled housing

Jerry Drahos Villa **715-496-1245**

1320 Pepper Ave, Wisconsin Rapids
*Developmentally disabled and
chronically mentally ill housing*

John H. Ringstad Villa **715-496-1245**

808 E Grant St, Marshfield
*Developmentally disabled and
chronically mentally ill housing*

Alvin O'Konski Manor **715-351-9357**

920 W Campus Drive, Wausau
*Physically disabled and some
senior housing*

Donald Sykes Villa **715-314-1106**

118380 W State Hwy 153, Stratford
Senior housing

Nancy Nye Villa **715-496-1245**

8140 Main Street, Pittsville
Senior housing

Harry & Velma Hamilton Villa **715-351-9357**

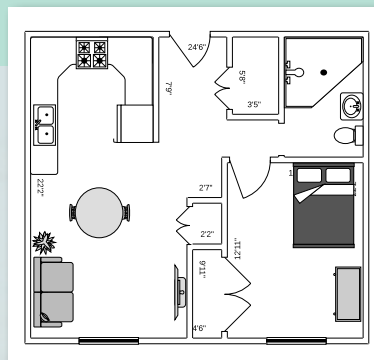
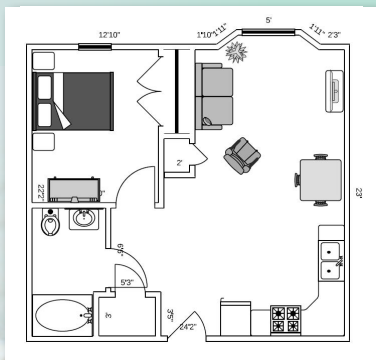
4001 Stewart Ave, Wausau
Senior housing

Rod Becker Villa **715-314-1106**

645 Maple Ct, Rib Lake
Senior housing

Donald Wick Villa **920-716-3279**

503 West College Avenue, Wittenberg
Senior living



Now taking
applications
for our
waiting list.

ImpactSeven.org

Leave your maintenance worries behind

Most properties are pet-friendly and include community rooms,
on-site laundry and off-street parking.

Residents are responsible for 30% of adjusted income.

impact
management group



"This institution is an equal opportunity provider and employer."

NeighborWorks®
CHARTERED MEMBER



Tips to Spot and Avoid Social Security Scams

By Hougum Law Firm

Social Security scams are on the rise, and older adults continue to be the biggest targets. At Hougum Law Firm, LLC, we see firsthand how quickly a scam can put your identity, finances, and peace of mind at risk. Knowing how to spot the warning signs is one of the strongest ways to protect yourself and the people you love.



payment is trying to take advantage of you.

Report Suspicious Activity

If something feels off, trust your instincts. Report the incident to the Social Security Administration or the Federal Trade Commission right away. Staying safe starts with knowing what to look for and

questioning anything that doesn't feel right.

Here's what to watch for:

Know How the SSA Contacts You

The Social Security Administration will not call you unexpectedly asking for personal information. They will not threaten to suspend your benefits. If someone calls demanding your Social Security number or banking details, it's a scam.

Be Wary of Unsolicited Emails or Messages

Ignore unexpected emails, texts, or phone calls claiming to be from the SSA. The SSA will not ask for sensitive information through email. When in doubt, don't click, don't respond, and don't share anything personal.

Don't Pay for SSA Services

Applying for benefits, replacing a card, or updating your account is always free. Anyone asking for

Want help protecting your assets, benefits, and future?

Our team is here to support you. Call Hougum Law Firm, LLC at 715.843.5001 or visit hougumlaw.com to schedule a consultation. Let us help you protect what matters most.

LEIGH YAWKEY WOODSON ART MUSEUM



SPARK!

CREATIVE ENGAGEMENT PROGRAMS for PEOPLE
WITH MEMORY LOSS and THEIR CARE PARTNERS



FREE Monthly Social & Art-Making Event

Select Thursdays, 10:30 am - Noon

Call 715.845.7010 to Register

700 North 12th Street
Wausau, WI 54403
www.lywam.org

APPLEGATE TERRACE

**LIVING
CATERED
TO YOU**

TAKE A TOUR!

715-849-1514
applegateterracehs.com
3001 Westhill Drive
Wausau, WI 54401

THE RIGHT CHOICE FOR YOUR CARE

* Food Pantries

Circles of Joy

2918 Wildwood Lane, Wausau
715-848-4177

Assists w/referrals to area agencies & organizations. Pantry of non-perishable groceries for people in their areas who have no food. May provide food vouchers to area stores &/or assistance w/other material things. Clients must provide I.D. & own transportation.

Community Center of Hope

607 13th St, Mosinee
715-907-2576 www.cchope.net
Call for dates and times.

Covenant Food Pantry

1806 Weston Ave Schofield
715-359-6467
www.covenantcommunitypc.org
Distributes 2nd and 4th Wednesday of month, 3 - 5 p.m.

First Presbyterian Church Food Pantry

406 Grant St Wausau, 715-842-2116
www.firstpreswausau.org
Food is distributed on the 2nd & 4th Tuesday of each month between 1:00 and 2:00 pm.

Neighbors' Place Food Pantry

360 Grand Avenue, Wausau
715-845-1966
www.neighborsplace.org
Distributes nonperishable & fresh foods; baby, hygiene and personal care products and household items when available. M & W 1:30-4:30 and T & Th 10:30-1:30; Th 5-7. Can visit the pantry twice a month.

Ruby's Pantry

229375 Cty Rd J, Wausau
Drive thru distribution. Food bundles are \$25 & on a first come, first serve basis. Express track reservations online at rubyspantry.org. 1st Tuesday of the month. Registration at 3:00 pm

Salvation Army – Wausau

202 Callon Street, Wausau
715-845-4272
www.sawausau.org
Provides material assistance of food & shelter to eligible individuals in emergency or disaster situations.

St. Paul's Food Pantry

426 Washington Street, Wausau
715-842-3733
Food pantry available every Thursday of the month from 9 – noon for those in need of non-perishable food.

Wesley Church Food Pantry

1101 Elm Street, Wausau
715-842-3768
Food Pantry open by appointment only. Photo ID & transportation is required.

* Grocery Delivery

Kohlman's Inc. – Telephone Delivery Service

735 S. 3rd Ave., Wausau
715-845-4991
This grocery store offers an ordering and delivery service. Payment for groceries as well as the service fee is due when the order is delivered.

Lee's Piggly Wiggly Delivery Service

530 W. Hwy. 153, Mosinee
715-693-6700
Delivery on Tuesday and Thursday. Call during regular store hours for grocery delivery and delivery fee.

* Mobile Meals

ADRC-CW Meals on Wheels

888-486-9545
www.adrc-cw.org
Delivers nutritious meals & offers a well-check to persons who are 1) age 60 or older, 2) confined to their home because of illness or disability, 3) unable to prepare their own meals. Staff complete an in-home assessment. Hot meals are delivered on weekdays with service days dependent upon route availability. There may be a waiting list. Suggested contribution of \$5.00. No eligible person is excluded if unable to contribute, however contributions are a very necessary part of the budget.

Wausau Area Mobile Meals

360 Grand Ave, Ste 500, Wausau
715-848-5848
Provides hot, nutritious meals to the elderly, convalescing and/or disabled members of the greater Wausau area. Meals are planned & prepared at Aspirus Wausau Hospital & we are able to accommodate special diets as prescribed by a medical professional. Meals are delivered between 11am-1 pm, 5 days a week.

* Meal Sites

ADRC-CW Senior Dining Program

(888) 486-9545

www.adrc-cw.org

Wausau new location to be determined. 715-536-0311

Suggested contribution is \$4.50 per meal. Reservations are required by noon, one day in advance, and are made by calling the ADRC-CW.

Lenten Soup Kitchen

621 N. 2nd Street, Wausau

715-845-6715

Provides noon meals of soup & bread during Lent. Eligibilities: Open to all downtown visitors, workers & to the public. Free-will offerings accepted.

Community Christmas Dinner

St Paul's United Church of Christ,
426 Washington St, Wausau

715-551-4166

Please call for date and time for our Community Christmas dinner. Take-outs are welcome if called ahead before Dec. 20th to 715-842-3733. We do not offer delivery service. For all those in need of a hot meal or companionship this holiday season, please join us!



First Presbyterian Church Food Pantry

715-842-2116

www.firstpreswausau.org

Food is distributed on the 2nd & 4th Tuesday of each month between 1:00 & 2:00 pm.

Friends Thanksgiving Dinner

First Presbyterian Church,
406 Grant Street, 715-302-2832
Annual FREE traditional fare for all who would be alone or hungry on Thanksgiving. Served at the church, no reservations needed (or taken). Take-out meals are delivered to those who are unable to attend. No eligibility questions are asked.

Jubilee House

225 S. 28th Avenue, Wausau

715-842-3148

Serving a free community meal every Thursday 4:30 to 6:00 pm w/exception to Holidays and Holy Thursday and when Wausau School District closes due to inclement weather. Handicapped accessible. Open to all. No calling ahead.

Sunday Community Supper

406 Grant Street, Wausau

715-842-2116

www.firstpreswausau.org

Serves a free weekly Sunday evening meal from 4-5 pm for all community members. Not a dine in, drive-thru only.



The Value of a Trusted SRES Real Estate Advisor

By Dave Olson, Realtor®, SRES™ RE/MAX EXCEL

Seniors often require home sale or purchase transactions as a part of this stage of our lives. It's important to choose wisely and avoid pitfalls or exploitation when we make these major life decisions about our homes and future.

As a Licensed Real Estate Professional, I'm uniquely qualified to explain why having a trusted Realtor advisor is important to you. Establishing the value your home could bring in a home sale is critical in making all future decisions about your home and provides useful data relevant to your next chapter. This also provides critical knowledge that could protect you from unscrupulous people or scammers. There are those who prey on Seniors in this manner, undervaluing homes to unsuspecting Seniors for a windfall for the unethical buyer or scammer.

Choose a Realtor that has an SRES certification. That's a "Senior Real Estate Specialist" designation. This designation requires specific training and tools to uniquely qualify your agent to serve your targeted needs. SRES agents will be aware of your unique considerations, those concerns not encountered with other groups of buyers or sellers. SRES trained Realtors have knowledge and experience to coordinate with your other trusted advisors during your home sale or purchase. An SRES understands your needs better than agents not qualified in this sector of the Real Estate market.

Good SRES agents look for features and benefits in your next home that will benefit you for years to come and coach you on why those are



beneficial. Their goals will be to serve you first, finding the home that is best, even if it takes longer.

Choose a Realtor savvy in establishing accurate valuations for homes. Ask about their skillset in performing a Comparative Market Analysis. Select an agent that knows your market well and has performed this successfully for past clients. A CMA uses comparable properties that are actively on the market or recently sold. These properties are comparable to your home in age, size, location and features. I offer

my CMA services at no cost or obligation to my customers and clients.

Establish your current home's value prior to your next move. A qualified ethical and professional SRES Realtor is the perfect source for this service. This gives YOU a no-cost position of empowerment and knowledge and peace of mind prior to taking the next step, whether buying or selling.



OnMedicare
Independent Insurance Agency

MICHAEL ANDERSON
LICENSED INSURANCE AGENT

**CONFUSED ABOUT
MEDICARE?**

CALL
715-301-0786

FRIENDLY, LOCAL, NO-COST HELP





Your Seniors Real Estate Specialist (SRES®)

An SRES® is your trusted ally and advocate throughout the buying and selling process, making real estate transactions for older adults less stressful and more successful.

REMAX
Excel
Dave Olson
REALTOR®, SRES™, ABR®
715.573.8976
1050 GRAND AVENUE
SCHOFIELD, WI 54476
WWW.DAVESELLSWAUSAU.COM



DRACH
ELDER LAW
CENTER LLC
ATTORNEYS AT LAW

Attorney Jeffery Drach is a trusted Certified Elder Law Attorney leading the way in areas of protecting your home, money and independence. Our services include, but not limited to:

- ◆ Life Planning (Power of Attorney)
- ◆ Medicaid Planning
- ◆ Estate Planning (Wills & Living Trusts)
- ◆ Special Needs Planning
- ◆ Asset Preservation Planning (Revocable & Irrevocable Trusts)
- ◆ VA Planning ◆ Guardianships ◆ Probate

715.842.0606

www.drachelderlawcenter.com



IN-HOME CARE

STARTING THE CONVERSATION

RECOGNIZE SIGNS IT MIGHT BE TIME FOR IN-HOME SENIOR CARE



Not wanting to leave the house

Forgetting to take medication regularly



Refusing to shower or change clothes

Getting confused when questions are asked



Losing weight from not eating or cooking meals

Becoming isolated from friends & family



TIPS FOR HAVING THE CONVERSATION

START EARLY

Keep it simple, choosing a comfortable time & place. Ask mainly open-ended questions to find out what is important to your loved one. Avoid acting like a parent - use words that are non-threatening.

BE UNDERSTANDING

Diagnosis of Alzheimer's or Parkinson's is scary to hear. Any resistance could be a result of fear of losing control. Put yourself in their shoes - would you want help? Also, watch for signs of depression.

BE HONEST

Express your concern without accusing. Tell them you are worried about them vs. telling them they are doing something wrong. Use examples, such as "Your medications got mixed up." Focus on behavior, not the person.

BE RESPECTFUL

It will be hard for your loved one to admit they aren't able to do everything for themselves anymore. The decision to have in-home care will ultimately be up to them. Suggest ideas to them without being pushy.

ASK FOR HELP

Meet with your loved one and his or her doctor. It will be a helpful unbiased opinion. Ask others who use in-home care, and see if they would be willing to discuss the benefits with your loved one.

Sources:

www.comfortkeepers.com/office-326/family-education-center/starting-the-conversation
www.helpguide.org/elder/senior_services_living_home.htm
www.caregiverstress.com/family-communication/40-70/communication-tips

Assisted Living

	Type (AFH, RCAC, CBRF)	Monthly Cost Range	Subsidized	Private Units	Scheduled Transportation	Alzheimer's Care	Respite Care	Call System	Diabetes Mgmt.	Rehab Services	24/7 On-Site Care
Acorn Hill 715-693-8844	RCAC	\$815 & up	Yes	Yes	Assist With	Yes	No	Yes	Yes	Contract With	Yes
Azura Memory Care 715-491-0882	CBRF	\$3,925 -6,650	No	Yes	Assist With	Yes	Yes	No	Yes	Yes	Yes
Cedar Creek Manor 715-355-8246	CBRF	\$3,607 & Up	Yes	Yes	Assist With	Yes	Yes	Yes	Yes	Yes	Yes
Platinum Communities Assisted Living of Schofield 715-298-0218	CBRF	\$4,350 -5,850	MCO	Yes	Yes	Yes	Yes	Yes	Yes	Yes	Yes
Platinum Communities Memory Care of Schofield 715-355-0586	CBRF	\$4,350 -5,850	MCO	Yes	Yes	Yes	Yes	Yes	Yes	Yes	Yes
Platinum Communities Assisted Living of Marathon 715-443-2727	CBRF	\$4,350 -5,850	MCO	Yes	Yes	Yes	Yes	Yes	Yes	Yes	Yes
Garden Apartments 715-845-1214	RCAC	\$3,898 & Up	Family Care	26	Social Outings	Early Stage	Yes	Yes	Yes	Yes	Yes
Homme Home of Wittenberg 715-253-2125	CBRF	\$4,090 -6,036	Family Care	Yes	Social Outings	Yes	Yes	Yes	Yes	Yes	Yes
Pride TLC 715-298-3833	CBRF	\$3,555 & Up	Yes	Yes	Assist With	Early Stage	Yes	Yes	Yes	Yes	Yes
Stone Crest Residence 715-849-5462	CBRF	\$6,325	Family Care	16	Social Outings	Yes	Yes	Yes	Yes	Yes	Yes
The Renaissance Assisted Living 715-355-5858	CBRF	Call	No	Yes	Yes	Yes	Yes	Yes	Yes	Yes	Yes

The Helping Hands Guide does its best to put together the most accurate information for these listings. Because business services change and prices vary throughout the year, we recommend that you call any business you are interested in getting information from before making any decisions. We tried our best to gather all of the information from each company and to the best of our ability is up-to-date as of January 2026.



Directory

Skilled Nursing

Benedictine Living Community of Wausau

1821 N. 4th Ave., Wausau
715-675-9451
blcwausau.org

Mount View Care Center

2400 Marshall St., Wausau
715-848-4300
www.norcen.org

Pine Crest Nursing Home

2100 E 6th Street, Merrill
715-536-0355
pinecrestcare.com

Pride TLC Recovery and Rehab

7805 Birch Street, Weston
715-298-3833
www.pridetlc.com

Rennes Health & Rehab - Weston

4810 Barbican Avenue., Weston
715-393-0400
rennesgroup.com

Waterfall Health of Wausau

1010 E. Wausau Avenue, Wausau
715-842-2028
www.waterfallhealth.com/wausau

Wausau Manor Health Services

3107 Westhill Drive, Wausau
715-842-0575
nshorehc.com

Rehab and Skilled Nursing

	Total Beds	Medicare	Medicaid	Daily Cost Range	Respite Care	Hospice Contract	Respiratory Care	IV Therapy	Therapy Services	Memory Care
Mount View Care Center North Central Health Care 715-848-4300	160	Yes	Yes	Call	Yes	Yes	Yes	Yes	Yes	Yes
Pine Crest Nursing Home 715-536-0355	120	Yes	Yes	Call	Yes	Yes	Yes	Yes	Yes	Yes
Pride TLC Recovery and Rehab 715-298-3833	25	Yes	Yes	Varies	No	Yes	Yes	Yes	Yes	No
Rennes Health and Rehab 715-393-0400	84	Yes	Yes	Call for more info.	No	Yes	Yes	Yes	Yes	No

The Helping Hands Guide does its best to put together the most accurate information for these listings. Because business services change and prices vary throughout the year, we recommend that you call any business you are interested in getting information from before making any decisions. We tried our best to gather all of the information from each company and to the best of our ability is up-to-date as of January 2026.

Directory

Adult Day Care

Aurora Day Services

451 Grand Avenue,
Schofield
715-359-2879
auroraservices.com

Community Supported Living-Supported Home Care

388 River Drive,
Wausau
715-842-8700
oppincwi.org

Homme Heights Adult Day Center

2901 N.7th Street,
Wausau
715-845-1214
ext 310
homme.org

Kindhearted Home Care's Adult Social Center

120 S. Mill Street,
Merrill
715-218-3772
kindheartedhomecare.com

North Central Health Care – Adult Day Services

1100 Lakeview Drive,
Wausau
715-848-4317
wnorcen.org



Can't Hear on the Phone?

Get a NO-COST CapTel Captioned Telephone!

The CapTel® Captioned Telephone shows captions of everything a caller says, letting you read anything you cannot hear over the phone. To qualify for a no-cost phone, users only need hearing loss and an Internet connection! If you have difficulty hearing over the phone, contact your local Outreach Educator.

Chris Moylan
920-540-0704
chris.moylan@oeius.org

CapTel®
Captioned Telephone

No
Landline
Needed



REQUIREMENTS: Hearing Loss, High Speed Internet. No-Cost phone option is subject to change without notice. Terms and conditions may apply. FEDERAL LAW PROHIBITS ANYONE BUT REGISTERED USERS WITH HEARING LOSS FROM USING INTERNET PROTOCOL (IP) CAPTIONED TELEPHONES WITH THE CAPTIONS TURNED ON. Automatic speech recognition software generates captions of what the other party to the call says, and, in certain circumstances, a live communications assistant may be included on the call to make needed corrections and/or add call details. The captions are then sent to the phone. There is a cost for each minute of captions generated, paid from a federally administered fund. No cost is passed on to the CapTel user for using the service. CapTel captioning service is intended exclusively for individuals with hearing loss. CapTel® is a registered trademark of Ultratec, Inc. (v1 2-25)



Funeral Homes and Monuments

* Funeral Homes

Ascend Funeral Home & Cremation Care

2809 Jelinek Avenue
715-214-1228
www.ascendweston.org

Beste Funeral Home

611 3rd St., Mosinee
715-693-2450
www.bestefh.com

Brainard Funeral Home

522 Adams St., Wausau
715-845-5525
5712 Memorial Ct., Weston
715-845-5525
www.brainardfuneral.com

Helke Funeral Home-Cremation

302 Spruce St., Wausau
715-842-3993
www.helke.com

John J. Buettgen Funeral Home

948 Grand Ave., Schofield
715-359-2828
www.jjbfh.com

Peterson/Kraemer Funeral Homes & Crematory

715-845-6900
1302 6th St., Wausau
3400 Stewart Ave., Wausau
300 Walnut St., Marathon
312 Caroline St., Athens
327 N. 3rd Ave., Edgar
www.petersonkraemer.com

* Monuments

Haertel Monuments

2332 Main St., Stevens Point
715-344-6577
1915 Baker Dr., Wisconsin Rapids
715-423-2370
haertelmonuments.com

Norde Memorials Inc.

101 S. 3rd Ave., Wausau
715-842-3545
www.nordememorials.com

Wausau Monument Inc.

1602 Grand Ave., Wausau
715-842-4696
www.wausaumonument.com



2809 Jelinek Avenue, Weston | (715) 214 - 1228

How to Get Your Affairs in Order *By Becky Streeter*

It's never too early to make a plan for your estate, finances, and end of life wishes. Though it's not something many of us enjoy thinking about, the more we have prepared now, the less we will have to do later. Also, being prepared now lets you have the ultimate amount of control over decisions, which is not necessarily guaranteed the longer you wait. Below is a guide to help you get your affairs organized.

1. Create a **will** that designates how your property, finances, dependants, pets, and funeral preferences should be taken care of.
2. Create a **living will** specifying your advanced care directives, including the extent of life-saving and preventative measures.
3. Assign a **power of attorney** to make financial and medical decisions if you become incapacitated.
4. Create a **living trust** and designate a trustee to control and distribute assets if you become unable.
5. **Give permission** to your doctor and lawyer to discuss sensitive information with your caregiver and/or loved ones should there be a need.
6. **Gather all important documents**, keep them together in ONE safe location such as a fireproof box, and tell your lawyer or someone you trust where these documents are held. Regularly review these documents and make changes as needed. The National Institute on Aging recommends the following documents:

PERSONAL INFORMATION

- Full legal name
- Social Security number
- Legal residence
- Date and place of birth
- Names and addresses of spouse and children
- Certificates of birth, marriage, divorce, citizenship, and adoption
- Employers and dates of employment
- Education and military records
- Names and phone numbers of religious contacts

- Memberships in groups and awards received
- Names and phone numbers of close friends, relatives, doctors, lawyers, and financial advisors



FINANCIAL INFORMATION

- Sources of income and assets (pensions, IRAs, 401(k)s, interest, etc.)
- Social Security information
- Insurance information (life, long-term care, home, car) with policy numbers and agents' names and phone numbers
- Names of your banks and account numbers (checking, savings, credit union)
- Investment income (stocks, bonds, property) and stockbrokers' names and phone numbers
- Copy of most recent income tax return
- Location of most up-to-date will with an original signature
- Liabilities, including property tax — what is owed, to whom, and when payments are due
- Mortgages and debts — how and when they are paid
- Location of original deed of trust for home
- Car title and registration
- Credit and debit card names and numbers
- Location of safe deposit box and key

HEALTH INFORMATION

- Health records
- Current prescriptions (be sure to update this regularly)
- Living will
- Durable power of attorney for health care
- Copies of medical orders or forms (i.e. DNR)
- Health insurance information with policy and phone numbers

Make sure you talk about your preferences with your loved ones. This can be especially helpful for future medical decisions needed to be made on your behalf, including life-saving measures and potential organ donation if that is possible and desired, as well as funeral arrangements when the time comes. Having everyone on the same page helps your loved ones be prepared for your preferences and expectations.

Source: "Getting Your Affairs in Order Checklist: Documents to Prepare for the Future." National Institute on Aging. <https://www.nia.nih.gov/health/advance-care-planning/getting-your-affairs-order-checklist-documents-prepare-future#important-papers>. 1 FEB 2023.

safety smarts for seniors

Create a safer living environment with these helpful tips.



SMART FURNITURE

- Furniture should be easy to lean on and strategically placed so it can be used for balance.
- Avoid buying furniture that has sharp—and potentially dangerous—corners.



EASY REACHING

- Place frequently used things in waist-high cabinets & drawers—eliminating falls from bending high or low.
- Since knobs can be hard to grip, consider switching to drawer pulls.



SAFE WALKING

- Avoid using scatter rugs.
- Tuck electrical cords behind furniture, or use cable management products, which are available in most office supply stores.



SHARPER VISION

- Create a strong contrast in color between major pieces of furniture, walls, drapes and floors.
- Make nighttime navigation easier by using nightlights and motion sensor lights.

Source: SunriseSeniorLiving.com/Design

Pre-Planning | Cremation Services | Monument Sales

Curtis Beste, Funeral Director | **Nicholas Ficken**, Funeral Director



*Three Generations.
Family Owned and Operated.*

611 3rd Street, Mosinee

715-693-2450

www.bestefh.com

Beste 
FUNERAL HOME



Pink Ribbon Fitting Solutions

1108 S. 17th Avenue, Wausau
715-845-2800

A comprehensive facility servicing people with post-mastectomy, compression garment and wig needs.



We Offer:

- Custom scanning for breast prosthetics as well as a large selection of post-mastectomy products.
- Compression garments including custom and off-the-shelf options for the treatment of lymphedema & venous insufficiency.
- A large selection of wigs which we can customize to fit your head and your personal style.
- A variety of hats, scarves and turbans.
- All of our fitters are board certified with the American Board for Orthotics and Prosthetics. We have been fitting compression garments and mastectomy supplies for more than 20 years.

As of January 2024, Medicare now covers compression garments for patients diagnosed with Lymphedema

— pinkribbonfittingsolutions.com



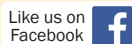
There's no place Like Home

Staying in your home isn't as easy as clicking your heels and wishing you were back home.

We Provide:

- | | |
|------------------------------|-------------------------|
| • Daily Living Needs | • Errands, Shopping |
| • Housekeeping | • Blood Pressure Checks |
| • Laundry | • Transitional Care |
| • Meal Preparation | • Companionship |
| • Transport | • Affordable Care |
| • Supportive & Personal Care | • Day or Night Care |
| • Medication Reminders | • And Much, Much More! |

Your care designed to meet your needs.



So stay home with us!
A1 Home Health Care
(715) 359-8160 • (715) 432-0911

Cedar Creek Manor

Providing quality, personal care for the elderly



Quality Services

- 24 hour awake care
- Medication monitoring & management
- Three home cooked meals & snacks daily
- Personal care assistance
- Planned activities
- Therapy dogs
- Beautician & barber services

Amenities

- Beauty salon
- Personal laundry
- Free cable
- Private phone available
- Housekeeping
- Furnished rooms
- And so much more!



715.355.8246

2480 Terrebonne Dr • Mosinee



Adult Day Care

	Dementia/ Alzheimer's	Traumatic Brain Injury	Physically Disabled	Instinctually Disabled	Emotionally Challenged/ Mental Illness	Frail/Socially Isolated Adults	Medicaid Accepted	Private Pay Accepted	Long Term Care Insurance	VA Payments	State Licensed
Kindhearted Home Care, LLC (Serving Lincoln County Only) 715-218-3772	Yes	Yes	Yes	Yes	Yes	Yes	Yes	Yes	Yes	No	Yes
North Central Health Care Adult Day Services - Wausau 715-848-4519	No	Yes	Yes	Yes	No	No	Family Care	Yes	No	No	No
North Central Health Care Adult Day Services - Antigo 715-627-6694	No	Yes	Yes	Yes	No	No	Family Care	Yes	No	No	No

The Helping Hands Guide does its best to put together the most accurate information for these listings. Because business services change and prices vary throughout the year, we recommend that you call any business you are interested in getting information from before making any decisions. We tried our best to gather all of the information from each company and to the best of our ability is up-to-date as of January 2026.



COMPREHENSIVE RETIREMENT PLANNING

Retirement Income Solutions
Health Insurance & Medicare Plans
Tax Strategies | 401(k) Rollovers
Employer-Sponsored Retirement Plans
Investment Management | Estate Plans



Schedule a complimentary consultation today!
715.355.4445 | RetireWithBuska.com

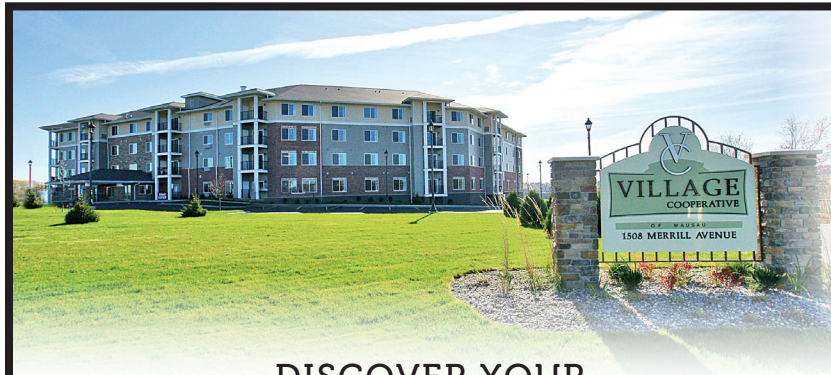
Advisory services are offered through Buska Wealth Management, LLC, an SEC Investment Advisor. Insurance products and services are offered through Buska Retirement Solutions, Inc., an affiliated company. Tax services are offered through Legacy Tax Solutions, LLC, an affiliated company.

Find us at seniorreviewnewspapers.com

Home Care

	Medicare Accepted	Medicaid Accepted	Private Pay Accepted	Long-Term Care Ins.	VA Payments	State Licensed	Wound Care	Home Modification	Home IV Care	Wound V.A.C.	Injection Care	Blood Draws	Private Duty	Durable Med. Supplies	No Age Limitation	Occupational Therapy	Physical Therapy	Speech Therapy	Respiratory Therapy
A1 Home Health Care 715-432-0911	No	Yes	Yes	Yes	Yes	No	No	No	No	No	No	No	Yes	No	Yes	No	No	No	No
Kindhearted Home Care (Serving Lincoln County Only) 715-218-3772	No	Yes	Yes	Yes	No	No	No	No	No	No	No	No	Yes	No	Yes	No	No	No	No
TLC Home Care, LLC 715-355-5673	No	Yes	Yes	Yes	Yes	No	No	No	No	No	No	No	Yes	No	Yes	No	No	No	No
Serene Care Solutions, Inc. 715-907-4610	No	Yes	Yes	Yes	No	No	No	No	No	No	No	No	Yes	No	Yes	No	No	No	No

The Helping Hands Guide does it's best to put together the most accurate information for these listings. Because business services change and prices vary throughout the year, we recommend that you call any business you are interested in getting information from before making any decisions. We tried our best to gather all of the information from each company and to the best of our ability is up-to-date as of January 2026.



DISCOVER YOUR CAREFREE LIFESTYLE

If you are ready for a simpler lifestyle
Call or email us! (715) 675-0287

VillageCoopWausau@gmail.com
 Facebook Village Cooperative of Wausau

Village Cooperative of Wausau
 1508 Merrill Avenue | Wausau, WI 54401

Have more time to enjoy life without the responsibilities of home maintenance. The **Village Cooperative of Wausau** is a community for 55+ adults who enjoy owning a maintenance free home. Owning a share in a cooperative is easy, affordable, and an excellent value. It's time to throw away your snow shovel and join us.



Ascend Funeral Home & Cremation Care: A New, Compassionate Choice in Funeral Care

By Lucas Gajewski, Executive Director & Licensed Funeral Director

When facing the loss of a loved one, or planning ahead for your own peace of mind, choosing the right funeral home matters. At Ascend Funeral Home & Cremation Care, we believe in doing things differently: with integrity, compassion, and local heart.



Another family wrote, “Jacob’s kindness carried us through decisions we never thought we’d have to make.” And a recent note shared, “Carrie showed us so much

warmth that it felt like she was part of our family.” It’s this kind of personal connection that defines the Ascend experience.



We are proud to be the Wausau area’s newest choice in funeral and cremation care. Ascend is a non-profit funeral home founded to bring affordable, personalized, and pressure-free funeral care back to the families who need it most. Unlike corporately owned funeral homes, Ascend is community-rooted and mission-driven; focused not on profit, but on people. What sets us apart? First, our nonprofit model means our focus is on people, not profits. That allows us to direct more energy back into the care and support of families. Many of our clients tell us they chose Ascend because of our clarity and openness. One testimonial shared: “*The care and compassion they extended to me and my entire family were beyond extraordinary.*” Another added: “*From the moment we stepped into Ascend, we felt an overwhelming sense of peace and trust.*” These voices reinforce our belief that our way of showing and sharing dignity and authenticity is the foundation of good care.

At Ascend, our experienced team includes Executive Director and Licensed Funeral Director, Lucas Gajewski, along with Licensed Funeral Directors Jacob Simonson and Carrie Hartleben. Families often speak about how each director brings something uniquely comforting. One testimonial reads, “*Lucas was exactly who we needed—steady, compassionate, and deeply respectful.*”

While our team is the heart of

Ascend, our beautiful new building is the space where that compassion becomes tangible. Families describe feeling a sense of peace the moment they enter; quiet rooms, warm lighting, and a layout designed to bring people together. Every detail of the space was chosen to help families feel supported, not overwhelmed.

We know that seniors often carry the responsibility of planning for others or making their own arrangements in advance. That’s why we emphasize clear communication, kindness, and patience. You’ll never be rushed or upsold. As one family said: “*We received what we needed most... genuine kindness and support. Thank you is not enough.*”

If you’re planning ahead, or need help today, we invite you to visit us. At Ascend Funeral Home & Cremation Care, we are here to foster the healing and growth our community needs to navigate loss.

Ascend Funeral Home & Cremation Care is located in the heart of Weston at 2809 Jelinek Avenue. Reach out for conversation at (715) 214-1228 or info@ascendweston.org.

MEADOWS OF MARATHON

24-Hour Care Staff | Housekeeping & Laundry
Gourmet Meals Daily | Events & Daily Activities
Beauty/Barber Shop | Lounge Areas & Community Patio



Meadows of Marathon is a community designed to provide individualized care while promoting independence to our residents, within the privacy of their own suite.



Platinum
COMMUNITIES

Book Your Tour Today!

715-443-2727

marathon@pt-78.com

663 Maratech Avenue | Marathon WI



Our Special Needs Trusts help preserve the assets of people with disabilities without endangering their eligibility for public benefits. For information on setting up a Wispect Trust use our Contact Us Form at wispect.org/contact-us/

LIVING BEYOND LIMITATIONS



Madison, WI
(608) 268-6006
wispect.org

1- and 2-bedroom Apartments Available



*We're family owned and operated and recognized
for the quality of care provided in our services.*

*Our units are not just for single or married couples...
Share a room with a friend or relative.*

(WHEDA Voucher Program Eligible)

Featuring:

- Private apartments include full kitchen, spacious bathrooms with walk-in shower, individual climate controls, patios, fireplaces and all utilities including expanded cable
- Regularly scheduled social activities
- Library/computer room with internet access
- Whirlpool spa
- Beauty and barber services
- Private family dining room
- Dietitian directed menu
- Trained professional care giving staff on duty 24/7
- Chapel
- Theater
- Assistance with medication, mobility, dressing, transportation, nutrition and more

No waiting list at this time.

Call for a tour.



430 Orbiting Dr., Mosinee | 715.693.8844 | www.acorn-hill.net

Some income restrictions apply. State Licensed Assisted Living Community.



*Enriching Lives.
Every Generation.*



Assisted Living with Personalized Care

- ✓ Registered Nurses On Staff
- ✓ Trained Caregivers On-site 24/7
- ✓ Medication Management
- ✓ Memory Care Services
- ✓ Delicious Meals & Snacks
- ✓ Engaging Activities
- ✓ Beautiful Surroundings

Schedule a Tour in a Community Near You

Serenity Villa

Slinger, WI and Campbellsport, WI
(262) 297-1512

Violet Meadows

De Pere, WI and Fond Du Lac, WI
(920) 338-3407 / (920) 924-5715

Pine Meadows

Schofield, WI and Mosinee, WI
(715) 432-2811

Lily Meadows

Westfield, WI
(608) 296-3190

www.traditionsseniorcare.com