

Helping Hands

2026

Resource Guide

for the
Mature Market
in the
Chippewa
Valley

Do you want to move? Maybe downsize? Or maybe
a loved one needs to know where they can get
in-home care or where they can go for a social meal?

You've come to the right place.

Helping Hands is here for you.

Need A Little Help Getting Around?



ALL STAR
MOBILITY, LLC

Quality Backed by Experience



ALL STAR
ELEVATOR, LLC

Quality Backed by Experience

Visit Our "NEW" SHOWROOM
Full Selection of Walking Aides



OVER 100 UNITS IN STOCK

Come See Our NEW Electric Bike Store

3315 Hwy 93, Eau Claire, WI

(Corner of Hamilton Ave & Hwy 93)



Wheelchairs

- Transport Wheelchair
- Manual Wheelchair
- Wheelchair Accessories



Bathroom Safety

- Transfer Benches
- Shower Chairs
- Commodes
- Raised Toilet Seats

Power Scooters • Stair Lifts

Power Wheelchairs

Lift Recliners • Elevators

Vertical Lifts • Ramps

Electric Bikes

Conversion Vans (New & Used)



Walking Aids

- Rollators
- Walkers
- Canes
- Crutches

We Service & Repair Your Equipment

FREE In-Home Assessment

Call to Schedule and Appointment!



LA CROSSE 608-519-9292

715-598-8433



www.AllStarMobilityLLC.com | www.AllStarElevatorLLC.com

Empowering Seniors to Prevent Healthcare Fraud



Protect
your personal information

Detect
suspected fraud, abuse,
and errors

Report
suspicious claims or
activities

Contact Senior Medicare Patrol | www.smpwi.org

888-818-2611



WisconsinSeniorMedicarePatrol

Call us with questions about
billing errors, scams, and
medical identity theft



SMP

Senior Medicare Patrol

Preventing Medicare Fraud

SMPs are grant-funded projects of the federal U.S. Department of Health and Human Services (HHS), U.S. Administration for Community Living (ACL).



SERVICE with PASSION



DISCOVER THE DIFFERENCE

Providing assisted living and memory care services in a thoughtfully designed community setting.

Experience the difference of a non-corporate, unconventional care provider like Comforts of Home.

More cost effective than our competitors, with no hidden fees—just reliable, affordable care you can plan around.



GREAT LOCATIONS

Menomonie Chippewa Falls

Hudson River Falls

Baldwin St. Croix Falls

www.COHSeniorLiving.com

Contents

Questions:
seniorreviewnewspapers@gmail.com
715-831-0325

Articles

- 9 Senior Safety Tips**
- 11 The Chippewa Valley Tsunami: \$2,500 Lifeline for Caregivers is Here**
- 24 It's About Living Well — Right to the End**
- 37 Friends at the Lake**

Directories

- 12-17 Eau Claire County**
- 19-23 Chippewa County**

Charts

- 8 Independent Senior Living**
- 26 Home Care**
- 28 Assisted Living**
- 33 Skilled Nursing and Rehabilitation**

AKRE Enterprises assumes no responsibility for the advertising content of this resource directory nor for any mistakes or omissions there in. No endorsements of any products or services is made and none should be inferred. The terms and conditions under which the advertisement will be honored are the sole responsibility of the advertisers and not AKRE Enterprises. A telephone call to the advertising business may eliminate confusion. All content in this guide was up to date at the time of the printing. If there are errors in the listings or charts, please feel free to contact us to make corrections. The Helping Hands Resource Guide is owned by AKRE Enterprises. Copyright © 2026. For more information, or to advertise in the next Helping Hands Resource Guide call 715-831-0325 or visit our new website www.seniorreviewnewspapers.com.



OWEN RUST Independent Living Apartments

HUD subsidized rent for persons 55 or over experiencing low income
OR persons with a disability.

- Income based rents
- No asset limits
- Rents based on 30% of income
- Heat, garbage, water and sewer included
- Elevator Service
- Cable ready outlets
- On-site manager & maintenance
- Community room
- Coin-operated laundry facilities
- Bus stop nearby
- Card access security entrances
- Off street private parking
- Vending machine
- Pets allowed with restrictions

**Tours available –
Call for an appointment
(715) 839-8602**



OWEN RUST
APARTMENTS

**300 William Street
Eau Claire**

For applications, contact the
Housing Authority of the City of
Eau Claire (715) 839-4943

Handicapped accessible apartments available.



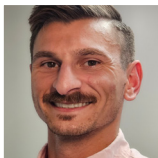
Medicare - You have questions we have answers AND our services are offered at no cost to you

The Medicare marketplace is more complicated and confusing than ever.
We want to help.

Your Medicare Health Plan Specialists:



Jeff Sauter
715.577.2641 (Cell)
jsauter@mediqwest.com



Casey Sauter
715.513.9967 (Cell)
csauter@mediqwest.com



Mediqwest
Medicare Simplified

505 S Dewey Street, Suite 103 | Eau Claire, WI 54701
715.318.9028 | www.mediqwest.com

Compassion and understanding in your time of need



Our staff is here to guide and assist you with a high degree of respect and concern during your time of loss. We will provide the most fitting service for your individual needs, at the most affordable cost with the many options that we offer.

Two options to serve you, at one convenient location:

Stokes, Prock & Mundt FUNERAL CHAPEL

Even the smallest touch can make a big difference in personalizing your funeral services.

715-832-3428
stokesprockandmundt.com



Cremation Society of Wisconsin

We have our own on-site crematory and a full staff to assist you with whatever your needs may be.

715-834-6411
cremationsociety-wi.com

Do you need help paying for burial or cremation expenses for your loved one?

Helpful Hearts Foundation was created to help low-income families who have experienced the death of a loved one, to pay for funeral expenses. For more information visit www.helpfulheartswi.org.



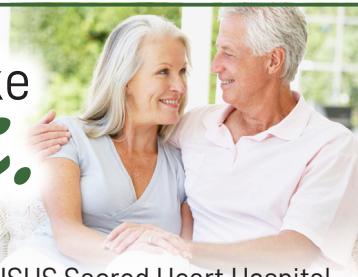
Helpful Hearts
Foundation



535 South Hillcrest Pkwy
Altoona, WI

We also service the entire state of WI.

Feels like
home.



- Located behind HSHS Sacred Heart Hospital
- Heat, water, sewer & garbage included
- Storage in apartment & basement
- Beauty salon, library and recreation room
- Tenant garages available



St. Francis
Apartments

851 University Drive,
Eau Claire, WI

Independent Senior Living for Seniors 62+

To schedule a tour, please call
715.834.1338 or 715.838.2000 | Email: admin@cwree.com

Independent Senior Living

**** Chippewa County**

	Subsidized	Public or Private Transportation	Pets Allowed	Beauty/ Barber Shop	Dining Space (DS) Meals Provided (MP)	Elevator to All Floors	Storage	Entertainment	Parking/Garage	Religious Services	Laundry
Bridgewater Apartments** 715-834-3411	Yes	Public	No	No	DS	No	Yes	No	Yes	No	Coin
Chippewa Manor Residential Living 715-723-4437**	No	Both	No	Yes	MP	Yes	No	Yes	Yes	Yes	Yes
Colony Park East 715-834-3411	Yes	Public	No	No	DS	No	Yes	No	Yes	No	Hook Up
Colony Park West 715-834-3411	Yes	Public	No	No	DS	No	Yes	No	Yes	No	Coin
Eastridge Estates 715-279-6693	No	Public	With Deposit	Yes	DS	Yes	Yes	Yes	Yes	Yes	Yes
Fall Creek Commons 715-834-3411	Yes	Public	No	No	DS	No	No	No	Yes	No	Coin
Good Shepherd Senior Apartments 715-834-3587	No	Public	Yes	Yes	DS	Yes	Yes	Yes	Yes	Yes	Yes
London Square Apartment 715-858-0873	No	Public	Yes	No	DS	Yes	No	No	Yes	No	Coin
Oakwood Apartments 715-831-7800	No	Public	Yes	No	DS	Yes	Yes	No	Yes	Yes	Coin
Owen Rust Apartments 715-839-8602	Yes	Both	Yes	No	DS	Yes	No	No	Yes	No	Yes
Park Tower Apartments 715-839-8602	Yes	Both	Yes	Yes	DS	Yes	No	No	Yes	No	Yes
St. John's Apartments 715-834-6302	Yes	Public	Yes	Yes	DS	Yes	Yes	Yes	Yes	Yes	Yes
St. Francis Apartments 715-834-1338	No	Public	No	Yes	DS	Yes	Yes	Yes	Yes	Yes	Coin

The Helping Hands Guide does its best to put together the most accurate information for these listings. Because business services change and prices vary throughout the year, we recommend that you call any business you are interested in getting information from before making any decisions. We tried our best to gather all of the information from each company and to the best of our ability is up-to-date as of January 2026.

SENIOR SAFETY TIPS

Staying healthy also means staying safe. Here are some of the top accident risks seniors face, and tips on how to prevent them.



MEDICATIONS



THE RISKS

26% of seniors make potentially serious mistakes when taking medications.

HOW TO STAY SAFE

- Be sure your doctor knows ALL medications you are taking.
- Check the expiration date of your medicines.
- Keep a Vial of Life kit in your home.

SLIPS & FALLS

THE RISKS

32% of seniors experience one or more falls per year and 57% of seniors who have fallen will fall again within the next 12 months.

HOW TO STAY SAFE

- Exercise regularly. Focus on leg strength and balance
- Ensure that steps and railings in your home are firmly fixed.
- Wear a medical alert button to get help quickly if you fall.



FIRES

THE RISKS

For seniors age 65+, the risk of dying in a fire is twice the national average. For seniors age 75+, the risk is 3 times greater.

HOW TO STAY SAFE

- Never smoke in bed
- Keep space heaters away from flammable material.
- Keep a working smoke, fire and CO2 monitors throughout your house.



SOURCE: BayAlarmMedical.com



For more than 65 years, Grace Lutheran Communities has been a trusted friend and good neighbor, providing quality care in western Wisconsin communities.

Our Care Communities:

Skilled Nursing

Grace River Pines

206 N. Willson Dr., Altoona, WI 54720
(715) 598-7800

Independent Living

Grace Parkside Apartments

49 E. Spring Street, Chippewa Falls, WI
(715) 832-1174

Grace Barstow Apartments

1105 South Barstow, Eau Claire, WI
(715) 832-1174

CBRF - Assisted Living

Grace Prairie Pointe

286 N. Willson Dr., Altoona, WI 54720
(715) 598-7900

Grace Edgewood

2512 Spooner Ave., Altoona, WI 54720
(715) 832-5813

RCAC -Assisted Living

Grace Willowbrook

4868 Otteson Lane, Eau Claire, WI 54701
(715) 835-0429



Call any of our locations for your personal tour!



www.graceluthfound.com



Follow us on Facebook!

We can help!



Start the New Year off *right*.
Talk to someone about your gambling.
Get Help!

Wisconsin Council on Problem Gambling
800-426-2535

SENIOR COMMISSION DISCOUNTS AVAILABLE!

Paul Canfield
REALTOR
715-828-0819

COPPER KEY
REALTY & WATERFRONT

service. excellence. results.

PaulAllenCanfield@gmail.com
www.ChippewaValley-Homes.com



Selling real estate in the
Chippewa Valley since 1997.

Plumbing & HVAC Services Grab Bar & Walk-in Shower Installation Estimates

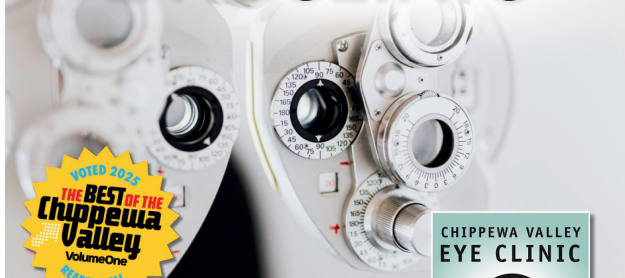
Call Us Today! 7/24/365 Available

1-800-307-9000

or service@wiersgalla.com

Wiersgalla Co.

CHIPPEWA VALLEY EYE CLINIC



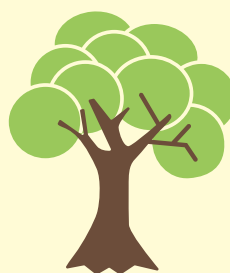
The Best Care in SIGHT

- ✓ Ophthalmology
- ✓ Optometry
- ✓ Optical

CVECLINIC.COM

EAU CLAIRE | MENOMONIE | RICE LAKE
715.834.8471 715.235.8335 715.234.8444

Outreach Locations in Black River Falls, Cumberland, Durand



Family Tree

Assisted living for people
with disabilities ages
18 and over

- Family oriented with 24 hour care
- Private & semi-private bedrooms
- Planned outings
- Assistance with medication
- No steps, one level
- Excellent family style home cooked meals

For more information
contact Pam Smith

2005 Agnes St, Eau Claire • 715-832-3663

GOVERNMENT SUBSIDIZED HOUSING

Golden Acres II

138 10th Street West, Altoona
Senior Housing, Wait List Available

- 1 Bedroom Apartments
- 24-hr Emergency Maintenance
- Water, Sewer and Trash Removal Included
- Pet Friendly
- Community Room w/Kitchen
- Laundry Room
- Basic Cable Included
- Patios
- Air Conditioners Provided w/ Central Air in Common Areas
- Daily Newspaper Available
- Emergency Call System
- Window Coverings

goldenacres@impactseven.org
715-965-1931

impact
management group



NeighborWorks
COMMUNITY DEVELOPMENT

The Chippewa Valley Tsunami: \$2,500 Lifeline for Caregivers is Here

By Rellim Senior Day Care

You've probably heard the term "Silver Tsunami" tossed around. But what does it really mean for us here in the Chippewa Valley?

It means five people turn 65 every single day — and that will continue until 2030. Of those five, four will need long-term care, and two people every day will be diagnosed with dementia. That's more than 5,000 families navigating memory loss, safety concerns, and emotional strain.

It's not just a wave. It's a flood of need. And the ones holding the line? Caregivers.

At Rellim, we see these heroes every day. They are the caregivers — quietly juggling medications, appointments, emotional support, and the exhausting task of keeping their loved one safe. They're doing it with love, but often without backup.

Right now, **60% of caregivers report feeling burned out or overwhelmed, and 40% of caregiving situations end in a burnout crisis.** It's often due to burnout blindness — stress builds slowly, so caregivers don't see it coming until they're already in crisis.

That's why we created the **COPING Score** — a simple, honest tool to help caregivers see where they stand. It's not emotional. It's not judgmental. It's just clarity. And clarity leads to action. And action leads to relief.

Scan the QR code to take the COPING Score and see where you stand.

Not only is Rellim here for you — but so is the **GUIDE Program!** This Medicare pilot provides \$2,500 annually for respite care — for the next seven years — to help families breathe. It's designed to reduce caregiver burnout and keep seniors home longer, healthier, and safer. And here's the best part: families get to choose how to use it!

While GUIDE funds can be used for in-home care, families who choose Rellim discover just how far those dollars can stretch — and how much more they receive. Instead of just three full days of in-home help, \$2,500 covers 25 days of RN-directed, activity-rich, friendship-filled care. That's nearly half a year of weekly relief, without the financial strain. It's not just cost-effective — it's connection-effective.

We also believe in prevention, not reaction. When caregivers are supported, seniors thrive. Families stay stronger. Seniors sleep in their own beds. And yes — it's better for the wallet, too!

Eligibility Checklist for GUIDE Funds

To qualify, families need:

1. Medicare Part A & B (not an Advantage plan)
2. A dementia diagnosis — any type
3. Not currently on hospice
4. Not living in a skilled nursing facility (assisted living or senior housing is okay!)

Even with dementia, socialization matters. It reduces behaviors, improves sleep, brings joy — and gives caregivers a full day off to rejuvenate. And if you're a spouse or family member who needs a break, this is your chance.

Call us today 715-600-0746— enrollment takes just five minutes, and you could be using the \$2,500 GUIDE funds in as little as two weeks. Don't qualify? Still call us, we can help!

At Rellim, we're ready to walk with you — one day of relief at a time.



Directory

Eau Claire County

* Senior Centers

Augusta Senior Center
Augusta 715-286-2953
augustawi.com/
community-center

Hmong Senior Center
Eau Claire
715-514-3491

LE Phillips Senior Center
Eau Claire
715-839-4909
lephillipssenior
center.com



* Food Pantries/Nutrition

Altoona United Methodist MANNA Meals
715-834-4923

Altoona Compassion Coalition
715-832-9953

Augusta Food Pantry
Augusta
715-225-4965

Christ Temple Food Pantry
Eau Claire
715-523-0670

Commodity Food Program
Eau Claire
715-834-1224 x6

Fairchild Food Pantry
Fairchild
715-334-3583

Fall Creek Comm. Cupboard
Faith Evangelical
Free Church
715-877-2330

Food Share -Eau Claire
Co. Human Services
715-839-2300
co.eau-claire.wi.us/DHS

Hmong Mutual Assistance
Eau Claire
715-832-8420
ecahmaa.org

Immanuel Lutheran Food Pantry
Eau Claire
715-832-7832

Hope Gospel Mission
Eau Claire
Ruth House (women's shelter)
2517 W. Moholt Dr.
Hope Gospel Mission (men's shelter)
2650 Mercantile Dr.

Meals on Wheels, Senior Dining Meal Sites, Liquid Supplement
715-839-4886
eauclaireadrc.org

Ruby's Pantry
Eau Claire
715-834-2959
goodshepherd-ec.org

Salvation Army
Eau Claire
715-834-1224
salvationarmy.org

St. Francis Food Pantry
Eau Claire
715-839-7706
stfrancisfoodpantry.org

The Community Table
Eau Claire
715-835-4977

Trinity Lutheran Food Pantry
715-832-6601

* Home Medical Supplies

ADRC Adaptive Equipment Loan Program
Eau Claire
715-839-4735
eauclaireadrc.org

All Star Mobility
Eau Claire
715-598-7511
allstarmobilityllc.com

Apria Health Care
Eau Claire
715-834-7517
apria.com

Grace Home Respiratory
Altoona
715-832-7377
ghr-ec.com

Mayo Clinic Health System
Eau Claire
715-838-1815
mayoclinichealthsystem.org

Mobility Works
Eau Claire
715-438-4030
mobilityworks.com

NuMotion, LLC
Eau Claire
715-552-3711
numotion.com

Reliable Medical
Eau Claire
715-997-3280
reliamed.com

* Adult Day Care

Augusta Health & Rehab

715-286-2266
augustahealth
andrehab.com

Aurora

Eau Claire
715-831-0467
wisconsin.
auruoraservices.com

Grace Adult Day Care

Altoona, 715-832-8811
graceluthfound.com

Hmong Adults Daycare Center, LLC

Eau Claire
715-514-3491

REACH Helen's House

Eau Claire
715-456-3874

Rellim Senior Day Care

Eau Claire
715-600-0746
rellimseniordaycare.com

* Decluttering/ Organizing Services

Caring Transitions

715-318-1410
caringtransitionschippewavalley.com

Cobwebs, Clutter & Companionship

Lisa Schaefer
715-831-8799

* Transportation

A & J Mobility

Eau Claire
715-874-6630
aandjmobility.com

Abby Vans, Inc.

Neillsville
1-800-236-8438
abbyvans.com

Anytime Transport

Eau Claire
715-559-6607

Eau Claire Transit

Eau Claire
715-839-5111
eauclairewi.gov/transit

Groome Transportation

Eau Claire
715-830-9400

Handilift

Cumberland
1-800-989-7433

MTM Medicaid Assistance Covered Transportation

1-866-907-1493

New Freedom Volunteer Driver Program

Eau Claire
715-233-1070

Non-Driver ID Motor Vehicles Division

Eau Claire
1-800-924-3570
dot.wisconsin.gov

Patients' Express

Chippewa Falls
1-866-336-7915

Sure Safe Medical Transportation

715-718-2330

Triniteam Caregivers

Eau Claire
715-858-9803

Western Dairyland

Eau Claire
715-836-7511 #1151
westerndairyland.org

Willows Way Transport

Eau Claire
715-492-4599

* Home Energy Assistance/ Weatherization

Department of Human Services

Eau Claire • 715-839-2300 • co.eau-claire.wi.us

Rural Development

Menomonie • 715-232-2614 #119 • rurdev.usda.gov

Western Dairyland

Eau Claire • 715-836-7511 • westerndairyland.org

GOVERNMENT SUBSIDIZED HOUSING
in Eau Claire County. Taking applications for our waiting list.

Ruth Gullerud Villa
4910 Otteson Lane Eau Claire
Physically disabled housing.

LEAVE YOUR MAINTENANCE WORRIES BEHIND
Most properties are pet-friendly and include community rooms,
on-site laundry and off-street parking.
Residents are responsible for 30% of adjusted income

ImpactSeven.org 715-279-6693

impact management group

NeighborWorks
CHARTERED MEMBER
"This institution is an equal opportunity provider and employer"



Directory

Eau Claire County

* Home Care

(Skilled Licensed Nursing Services)

Almost Family

Eau Claire 715-831-0631
almostfamily.com

Appeal to Heaven

Eau Claire, 715-379-7889
appealtoheaven.net

Aurora Community Health

Menomonie, 715-235-3707
auroraservices.com

Aveanna Healthcare

715-598-5600 | aveanna.com

Interim Healthcare

Eau Claire, 715-834-1313
interimhealthcare.com

International Quality Home Care

Eau Claire, 888-278-3405
alphaigh.com

Lily Home Health Care

Eau Claire, 715-201-2233
lilyhealthcare.org

Mayo Clinic Health System - Home Health & Hospice

Eau Claire, 715-831-0100
mayoclinichealthsystem.org

Modified Independence

715-579-7784
modifiedindependence.ec@gmail.com

Moore Genuine Care

Augusta, 715-286-2734
mooregenuinehomecare.com

* Home Care

(Supportive Non-Medical/Chore)

Almost Family

Eau Claire 715-831-0631
almostfamily.com

Aurora Community Health

Menomonie, 715-235-3707
auroraservices.com

Cornerstone Caregiving

Eau Claire 534-444-9021
cornerstonecaregiving.com

Good People

1-800-608-8003
goodpeople.us/info/home

Home Companions, LLC

Eau Claire, 715-577-0918

Home Instead Senior Care

Eau Claire, 715-941-4717

Interim Healthcare

Eau Claire, 715-834-1313
interimhealthcare.com

Kathy's Helping Hands, LLC

Altoona, 715-833-1727

Moore Genuine Care

Augusta, 715-286-2734
mooregenuinehomecare.com

Safe @ Home Senior Care

Eau Claire, 715-598-7233

Second Springs Care

Eau Claire, 715-861-3474
secondspringsllc.com

Seniors Helping Seniors

Eau Claire, 715-514-4511
seniorcareeauclaire.com

Village Caregiving

715-492-0191
villagecaregiving.com

Visiting Angels

715-598-1750
visitingangels.com/eauclaire

* Hospice Care

Gentiva Health Services - Heartland Hospice

Eau Claire, 888-436-8482
gentivahs.com

Interim Healthcare

Eau Claire, 715-834-1313
interimhealthcare.com

Lily Home & Hospice

Eau Claire, 715-201-2233
lilyhealthcare.org

Mayo Clinic Health System - Home Health & Hospice

Eau Claire, 715-831-0100
mayoclinichealthsystem.org

Moments Hospice

Eau Claire, 715-800-0910
momentshospice.com

St. Croix Hospice Care

Eau Claire, 715-598-2635
stcroixhospice.com

* Adult Family Home

Apple Valley Home

Eau Claire, 715-835-5141
AVHassistedliving.com

Dearwood Adult Family Home

Eau Claire, 715-830-0518

Genuine Care Adult Family Home

Augusta, 715-286-2248
mooregeniunehomecare.com

Sherwood Forest House of Hope

Altoona, 715-835-8701

* Assisted Living

Apple Valley Home

Eau Claire, 715-835-5141
avhassistedliving.com

BeeHive Homes, CBRF

Eau Claire, 715-874-HIVE
beehivehomes.com

Cambridge Senior Living

Eau Claire, 715-577-8418

Care Partners

Birch Street - 715-514-3709
Stonewood Drive - 715-874-5075
Briar Lane, Altoona - 715-598-7401
carepartners-countryterrace.com

Caretta Senior Living - Assisted Living

Eau Claire, 715-317-5239
caretta-seniorliving.com

Dimensions Living

Eau Claire, 715-471-6366
dimensionsliving.com

Grace Edgewood, CBRF

Altoona, 715-832-5813
graceluthfound.com

Grace Prairie Pointe, CBRF

Altoona, 715-598-7800
graceluthfound.com

Grace Willowbrook, RCAC

Eau Claire, 715-835-0429
graceluthfound.com

HeatherWood, RCAC

Eau Claire, 715-552-5511
heatherwoodal.com

Heritage Assisted Living, RCAC

Eau Claire, 715-831-9118
heritagesenior.com

Milestone Assisted Living, RCAC

Eau Claire, 715-874-4250
milestonesl.com

Oak Gardens, RCAC

Altoona, 715-793-0205
oakgardensplace.com

Orchard Hills Assisted Living (Dove Healthcare)

Eau Claire, 715-552-1030
orchardhillsassistedliving.com

SilverLeaf of Augusta

Augusta, 715-286-2400
augustaareahome.com

The Classic at Hillcrest Greens

Altoona, 715-839-0200
theclassichg.com

* Memory Care

Caretta Senior Living - Memory Care

Eau Claire, 715-317-5239
caretta-seniorliving.com

Care Partners Memory Care

Birch Street - 715-514-3709
Stonewood Drive - 715-874-5075
Briar Lane, Altoona - 715-598-7401
carepartners-countryterrace.com

Dimensions Living

Eau Claire, 715-471-6366
dimensionsliving.com

HeatherWood Memory Care, "The Glen"

Eau Claire, 715-552-5511
heatherwoodal.com

Heritage Court Memory Care

Eau Claire, 715-831-8200
heritagesenior.com

Lake Hallie Memory Care

Chippewa Falls, 715-738-0011
lakehalliememorycare.com

Milestone Senior Living Suites

Eau Claire, 715-874-4232
milestonesl.com

Our House Senior Living Memory Care

Eau Claire, 715-832-3970
ourhousesl.com

The Classic at Hillcrest Greens

Altoona, 715-839-0200
theclassichg.com

* Independent Living

Non-Subsidized

Briarwood Cottages

Eau Claire, 715-831-2128
briarwood-cottages.com

City View Apartments

Eau Claire, 715-835-6001
foxboroproperties.com

Congress St. Apartments

Eau Claire, 715-835-6001
foxboroproperties.com

EastRidge Estates

Altoona, 715-279-6693
impactseven.org

Good Shepherd Senior Apartments

Eau Claire, 715-834-3587
goodshepherdsenior
apartments.org

Heritage Apartments

Eau Claire, 715-834-6302
stjohnhousing.com

Hillside Apartments

Eau Claire, 715-835-6001
foxboroproperties.com

Directory

Eau Claire County

* Independent Living

Non-Subsidized (cont.)

London Square Apartments
Eau Claire, 715-858-0873
london@oakbrookcorp.com

Milestone Senior Living
Eau Claire, 715-874-4232
milestonesl.com

Oakwood Hills Sky Active Living
Eau Claire, 715-552-1500
sonidaseniorliving.com

Oakwood Home Apartments
Eau Claire, 715-831-7800
oakwood@oakbrookcorp.com

Real Life Cooperative
Eau Claire, 715-835-7622
realifeinc.com

St. Francis Apartments
Eau Claire, 715-834-1338

St. Paul Apartments
Augusta, 608-633-5138

The Classic at Hillcrest Greens
Altoona, 715-839-0200
theclassichg.com

The Meadows at Otter Creek
Eau Claire, 715-831-1068
firstlutheranfoundation.com

Wunderhaven
Fall Creek, 715-834-3411
landmark-company.com

* Independent Living

Subsidized

Augusta Country Apartments
Augusta, 715-514-1616

Colony Park East/West
Eau Claire, 715-834-3411
landmark-company.com

Fairchild Housing
Fairchild, 715-286-2718

Fairchild Senior Living
Fairchild, 715-839-6240
co.eau-claire.wi.us

Fall Creek Commons
Fall Creek, 715-834-3411
landmark-company.com

Golden Acres I
Altoona, 715-834-1842

Golden Acres II
Altoona, 715-834-7852

Grace Barstow Apartments
Eau Claire, 715-832-1174
graceluthfound.org

Owen Rust Apartments
Eau Claire, 715-839-8602
ci.eau-claire.wi.us/government/
housing

Park Tower Apartments
Eau Claire, 715-839-8602
ci.eau-claire.wi.us/government/
housing

Ruth Gullerud Villa
Eau Claire, 1-800-685-9353
impactseven.org

Solis Circle
Altoona, 715-832-4663

St. John's Apartments
Eau Claire, 715-834-6302
stjohnhousing.com

* Nursing Homes

Augusta Health & Rehab
Augusta, 715-286-2266

Dove Healthcare-West
Eau Claire, 715-552-1030
dovehealthcare.com

Dove Healthcare-South
Eau Claire, 715-552-1035
dovehealthcare.com

Grace Lutheran River Pines Skilled Nursing, Rehabilitation & Long Term Care Services
Altoona, 715-598-7800
graceluthfound.com

Oakwood Health Services
Altoona, 715-833-0400
oakwoodhealthservices.com

* Senior Housing Advisor

Assisted Living Advisors - Jenny Swanson
715-210-4066
assistedadvisors.com

* Funeral Homes / Cremation Centers (Eau Claire & Chippewa Counties)

Chippewa Valley Cremation Services & Celebration of Life Center

Altoona
715-835-3333
chippewavalleycremation.com

Cremation Society of WI

Altoona
715-834-6411
cremationsociety-wi.com

Evergreen Funeral Home & Crematory

Eau Claire
715-830-5470
evergreenfuneralhome.com

Horan Funeral Home

Chippewa Falls
715-723-4404
horanfuneralhome.com

Hulke Funeral Home

Eau Claire
715-832-5002
hulkefamilyfh.com

Johnson Monument, LLC/Lifetime Memorials

Chippewa Falls
715-723-5576
johnsonmonument.com

Lenmark-Gomsrud- Linn Funeral Home

Eau Claire
715-832-8301/715-834-4456
lenmarkfh.com

Olson Funeral Home and Cremation

Bloomer
715-568-5250
olsonfuneralhomebloomer.com

Pederson-Volker Funeral Chapel

Chippewa Falls
715-723-4649
pedersonvolker.com

Smith Funeral Chapel

Eau Claire
715-832-1141
smithfuneralec.com

Stokes Prock & Mundt Funeral Chapel

Altoona
715-832-3428
stokesprockandmundt.com

Thompson Funeral Home & Chippewa Valley Cremation Services

Bloomer
715-568-2310
thompsonfuneralhome.com



• Experienced Caregivers
• Insured and Bonded
• 24/7 Manager On-Call

Cornerstone
CAREGIVING

ASSISTED LIVING AT HOME

Welcome to Cornerstone Caregiving. We are a senior in-home care service that allows your loved ones to stay where they feel most comfortable: home. We are experienced senior care professionals who are willing and ready to be with your loved ones whenever they need help, for as long as they need help.

What We Can Offer:

- COMPANIONSHIP
- LIGHT HOUSEKEEPING
- ERRANDS
- TRANSPORTATION
- MEAL PREPARATION
- MEDICATION REMINDERS
- EXERCISE
- WALKING
- GROOMING
- DRESSING
- PERSONAL CARE
- INCONTINENCE CARE
- BATHING
- REPOSITIONING
- PLANT CARE
- PET ASSISTANCE
- CONTACT US FOR A FREE ASSESSMENT

**WE ACCEPT
LONG-TERM CARE
INSURANCE,
VA BENEFITS &
PRIVATE PAY.**

Call Today!
534-444-9021
abalow@cornerstonecaregiving.com
www.cornerstonecaregiving.com/eauclaire
2155 Eastridge Center, Eau Claire, WI 54701




Dove Healthcare

**Assisted Living
& Memory Care**
a comfortable step between
home and skilled nursing

**Tracheostomy
& Ventilator Care**
by staff trained in respiratory care

Physical Therapy
after surgery, injury, or illness

Skilled Nursing Care
directed by your physician

Long-Term Care
when 24 hour care is needed

715-726-3852 • dovehealthcare.com

YOUR LOCAL HOMETOWN PHARMACY

**Beyond Prescriptions,
We're Your Partner in
Health and Wellness.**

- ✓ Vaccines & Immunizations
- ✓ Supplements
- ✓ Long Term Care Services
- ✓ Simplified Medication Packaging
- ✓ Medication Synchronization and Reviews
- ✓ Local Delivery

Give us a call or stop in today!

Mondovi Pharmacy 122 S. Eau Claire St - Mondovi
715-926-4938

Ed's Pharmacy 1511 Main St - Bloomer
715-568-2190

Wally Shong Pharmacy 153 W Lincoln St - Augusta
715-286-2515

Independent Living for Seniors 55 and Older

1 Bdrm - \$1049-1300 / 2 Bdrm - \$1550-1800 + utilities
Water, sewer, trash and cable included in the rent.

**Fitness, chapel, salon
& maintenance onsite.
Beautiful walking path
and social activities
daily. Underground
parking available.**

Eastridge Estates

The standard for quality in adult living

*Professionally managed by
Impact Management Group*



"This institution is an equal opportunity provider and employer."



3504 Hoover Ave, Altoona
715.279.6693

2026-2027 CONCERT SEASON



Connecting music and community

EAU CLAIRE CHAMBER ORCHESTRA

**THE LIBRARY
DELIVERS** items to
customers unable to
visit due to health or
other circumstances.
715-839-4857



WWW.ECPUBLICLIBRARY.INFO/DELIVERY

Apple Valley Home

Assisted Living With A Touch of Luxury



- Colonial style home - built in 1991
- Offering 4 spacious resident rooms, with each room featuring 249 square feet of living space and a private bath.
- Focus is individualized assisted living for adults who can benefit from personal care, health monitoring, and supportive services to improve, stabilize, or maintain their physical health, mental health and well-being.

APPLE VALLEY HOME

6700 Highway 53 | Eau Claire

(715) 835-5141



There's no better home for your loved one than Apple Valley

* Transportation

Curtie Cares

715-568-2211

MTM Medicaid Assistance Covered Transportation

1-866-907-1493

New Freedom Transportation Program

715-514-4200 / 800-228-3287

Ready Ride Taxi

715-864-2409

Shared Ride Taxi Program

(City of Chippewa Falls only)
715-726-2728 / 715-723-3000

Town and Country Taxi

715-563-7272

Veterans Service – Veterans Van
715-726-7990

* Senior Centers

Bloomer Senior Civic Center

Bloomer
715-568-1888

Chippewa Falls Area Senior Center

Chippewa Falls
715-720-1666

Cornell Senior Citizens Center

104 N. 3rd, Cornell
Weekdays 1:00 pm - 5:00 pm

* Medical Equipment Loan Closet

Center for Independent Living

Menomonie
1-800-228-3287, 715-233-1070
cilwww.com

Cornell Lion's Club

715-595-4275 or 715-456-8749

Department of Public Health

Chippewa Falls, 715-726-7900

Rutledge Charities,

Chippewa Falls
715-723-6618

Lake Holcombe Lion's Club

715-595-4421



* Wheelchair Accessible Transportation

Abbey Van

1-800-236-8438/
715-743-3364

A & J Mobility

Eau Claire
715-874-6630,
877-833-9830

New Freedom Transportation Program

800-228-3287

Patients' Express

Non-Emergency
715-723-3867

Shared Ride Taxi

Chippewa Falls
715-723-3000

Tender Care Transport

715-835-2435 /
800-498-2050
tendercaretransport.com

* Food Pantries/Nutrition

4-C's Food Pantry

329 Main St, Cadott, 715-289-4941
Open Friday 2:00 - 4:00 pm

Bloomer & New Auburn Food Pantry

Serving Bloomer and New Auburn school districts
808 Jackson St, Bloomer; Leave Message: 715-568-3733
Friday 10:00 am - 4:00 pm

Chippewa Area Food Pantry/Salvation Army

2211 S Hastings Way, Eau Claire, 715-834-1224
**Chippewa store closed but Chippewa Falls programs are being revamped to be offered at the Eau Claire location. More info to come.*

Chippewa Falls YMCA Food Pantry

611 Jefferson Avenue, 715-861-3892
Mondays 10:00 - Noon; Wednesdays 2:00-6:00pm;
Fridays 12:00-2:00pm. Drive up only.

Cornell Food Pantry

401 S. 2nd Avenue, Cornell; 715-202-3531
Open Tuesday 3:30 - 5:30 pm

First Presbyterian Church

130 W. Central St., Chippewa Falls, 715-723-5717
Open Mondays 1:00-3:00 and Tuesdays 10:00-Noon

Fruit of the Vine Pantry

W11581 Cty. Hwy X, Stanley, 715-203-0137
Open 1st & 3rd Tuesday, 4:00 - 6:00 pm

Holcombe Food Pantry

27841 County Hwy M, Holcombe, 715-595-4967
Open 2nd & 4th Tuesday, 2:00 - 5:00 pm

Jim Falls Community Food Pantry

13883 Cty. Hwy. S, Jim Falls
Open Mondays, 4:00 - 6:00 pm

L.E. Phillips Career Development Center

21 E. Grand Ave, Chippewa Falls, 715-861-5002
Mon: Appointment only; Tue-Fri 9:00am-3:30pm
Pantry & outdoor "Blessing Box"

Pantry Pals Food Pantry

Serves Lafayette and Stillson school district residents
English Lutheran Church
20588 Cty. Hwy. X, Chippewa Falls, 715-723-4231
Open 3rd Saturday from 10:00 - 11:30 am

Ruby's Pantry for Chippewa Falls

(Open to all with a \$25 donation)
Chippewa Valley Bible Church - 531 E South Ave.,
Chippewa Falls, 715-723-2827.
Open 3rd Tuesday of month from 2:30 pm-5:00 pm

Stanley Food Pantry

Our Savior's Lutheran Church, Stanley, 715-644-0644
147 East 4th Avenue, Stanley
Open 1st Thursday, 4:00 - 6:00 p.m

St. Francesca Resource Center Food Pantry

Corner of Allen and High Streets (in the back of
the old Notre Dame school), Chippewa Falls
Open: Tuesday from 9:00 am-1:00 pm;
4:00 pm- 7:00pm. Can visit every 2 weeks.
Bring a box or bags.

Valley Vineyard Food Pantry

910 Bridgewater Avenue, Chippewa Falls,
715-828-6479
Open: Tuesday and Thursday from 5:00pm-7:00pm

* Home Delivered Meals

ADRC - Meals on Wheels

715-738-2590
Delivered hot meals for homebound individuals
aged 60+ living outside the city limits of
Chippewa Falls. If living within city limits, see
Mobile Meals.

Chippewa County Nutrition Program

715-726-7777

Go Getters – Bloomer Area Food Pantry

715-568-3733
Volunteer grocery shoppers for people with
health concerns or transportation issues.

Mobile Meals

715-723-0486
Available to Chippewa Falls residents (within
city limits) who are unable to prepare their own
meals due to aging or health related issues.

* Housing Maintenance Fuel Assistance

All Star Mobility
715-598-7511

Chippewa County Economic Support (fuel assist),
Chippewa Falls
715-726-7840

Housing Authority
715-726-7933

Seniors Helping Seniors
715-514-4511

Tomorrow Home Foundation
(Manufactured/Mobile Homes)
608-255-3131

USDA Rural Development
715-635-8228

West Cap
715-726-7840

WisLoan
1-866-419-1260

* Homeless Resource

Starting Points - Chippewa Falls 715-726-7937

* Dining Options

Bloomer
Bloomer Sunday Social Supper
715-568-3612
2121 Duncan Road
Distribution: 2nd Sunday at 4:00pm

Cadott
Nutrition – Come Now and Eat
215 East Seminary Street
715-289-4521
Distribution: 4th Wednesday 4:30pm - 6:00pm

Chippewa Falls
Agnes' Table - Trinity United Methodist Church
201 W. Central Street
715-861-3892
Free hot meal. Social Hours:
3:30 pm- 5:00 pm Dinner
Served Tue/Thurs. 5:00-6:30pm

Barnabas Christian Coffee House
19 W Spring Street
715-404-5330
Open Monday, Wednesday, and Friday 5:30pm-6:30pm

Chippewa Falls Area Senior Center
1000 East Grand Avenue
715-579-2896
Call for more information

We Care Sunday Meal
Our Saviour's Lutheran Church
1300 Mansfield Street
715-723-6048
Serving last Sunday of each month.

Cornell
Contact ADRC for Senior Dining Information
715-726-7777

* Adult Day Care

Adult Day Care of Chippewa Valley, Altoona, 715-832-8811

CRI Beyond Limits Day Service
Eau Claire, 715-438-6029

Grace Adult Day Services
Chippewa Falls, 715-738-1925

Rellim Senior Day Care
Eau Claire, 715-600-0746



* Home Care

(Skilled Licensed Nursing Services)

Almost Family

715-831-0631 almostfamily.com

Appeal to Heaven

715-379-7889

Interim Healthcare

715-834-1313

Mayo Clinic Health System - Home Health & Hospice

715-831-0100/1-800-236-8408

Moore's Genuine Care

715-286-2734

Recover Health

715-598-5600

St. Croix Home Care and Hospice

715-598-2635

* Home Care

(Supportive Non-medical)

Almost Family

715-831-0631
almostfamily.com

Appeal to Heaven

715-379-7889

Aurora Community Health

715-235-3707

Home Instead – Senior Care/ Non-Medical Eldercare

715-941-4717

Interim Healthcare

715-834-1313

Seniors Helping Seniors

715-514-4511

Visiting Angels

715-598-1750

* Assisted Living

****Designates Memory Care Facility**

Aggie's Country Living

Bloomer, 715-288-6333

Care Partners - Country Terrace

Bloomer, 715-568-9140

carepartners-countryterrace.com

Care Partners - Country Terrace

Stanley, 715-644-3444

carepartners-countryterrace.com

Chippewa Manor Residential Center

Chippewa Falls, 715-726-2123

Comforts of Home

Chippewa Falls, 715-598-8031

Home Suite Home

Chippewa Falls, 715-726-1113
homesuitehomeonline.com

****Lake Hallie Memory Care**

Chippewa Falls, 715-738-0011
lakehalliememorycare.com

Lakehouse Chippewa Falls

Chippewa Falls, 715-201-4524
lakehousechippewafalls.com

Meadowbrook of Bloomer

715-568-2503

Midwest Gratus

Chippewa Falls, 715-861-5320

Our House Assisted Care

Chippewa Falls, 715-723-6840

****Our House Memory Care**

Chippewa Falls, 715-723-6037
ourhousesl.com

****Dove Healthcare - Rutledge Home Assisted Living & Memory Care**

Chippewa Falls, 715-723-5566
rutledgehome.com

****The Homeplace of Stanley, Mondovi, Durand & Dorchester**

715-644-2137

thehomeplaceof.com



* Independent Living

Subsidized

Bridgewater Apartments
Chippewa Falls, 715-834-2691

Grace Parkside Apartments
Chippewa Falls, 715-832-1174

Grandview Apartments
Cadott, 715-834-3411

Lake Como Home II
Bloomer, 715-834-3411

Lakeview Apartments
Bloomer, 715-834-3411

Moon Park Apartments
Stanley, 715-282-4949

Northern Apartments
Chippewa Falls, 715-723-7875

Park Ridge Apartments
Boyd, 715-723-7552

Ravenswood Apartments
Cornell, 715-834-3411

Romeis Millstream Apartments I and II
Chippewa Falls, 715-723-7552

Shoe Factory Apartments
Chippewa Falls, 715-726-0586

Southridge Apartments
Cadott, 715-723-7552

Squire Drive Apartments
Cornell, 715-834-3411

Stanley Court Apartments
Stanley, 715-289-4755

Sunrise Village
New Auburn, 715-726-7933

Sunset Homes
Stanley, 715-644-5755

Westside Apartments
Bloomer, 715-834-3411

* Independent Living

Non-Subsidized

Auction Mart Apartments
Stanley, 715-726-7933

Cadott Country Apartments
Cadott, 715-289-4755

Chippewa Manor Residential Living Center
Chippewa Falls, 715-723-4437

Homestead Village Senior Apartments
Chippewa Falls, 715-726-9664

North Town Apartments
Cadott, 715-579-5179

Northland Apartments
Chippewa Falls, 1-800-432-5755

Parkview Apartments
Bloomer, 715-568-5446

St. Joseph's Apartments
Chippewa Falls, 715-723-5828

Stanley Country Apartments
Stanley, 715-644-6702

The Landing
Chippewa Falls, 715-861-7753

* Skilled Nursing

Chippewa Manor Nursing Home
Chippewa Falls, 715-723-4437
chippewamanor.com

Cornell Health Services
715-239-6288
northshorehc.com

Dove Healthcare
Bloomer, 715-568-9770
dovehealthcare.com/bloomer

Dove Healthcare - Regional Vent Center
Chippewa Falls, 715-723-9341
dovehealthcare.com

Mayo Clinic Health System Chippewa Valley - Maplewood Nursing Home
Bloomer, 715-568-2000
mayoclinichealthsystem.org

WI Veterans Home at Chippewa Falls
715-720-6775
wisvetshomes.com

* Senior Housing Advisor

Assisted Living Advisors - Jenny Swanson
715-210-4066
assistedadvisors.com

It's About Living Well — Right to the End

By Stokes, Prock & Mundt Funeral Chapel

We spend our lives planning for the things that matter — vacations, weddings, retirement, even what's for dinner next week. But one plan many of us avoid is one of the most meaningful of all: planning for how we want to be remembered. Funeral preplanning isn't about death; it's about living well, right up to the very end. It's a chance to ensure that your final chapter reflects the life you've lived — and to give your loved ones the priceless gift of peace of mind.

Many people don't realize how much emotional weight is tied up in "what if" thoughts about the future. Questions like "What will happen when I'm gone?" or "Will my family know what to do?" can quietly sit in the back of your mind for years. By taking the time to preplan your funeral, you clear away that mental clutter. Instead of uncertainty, there's calm. Instead of leaving decisions to others, you've put your wishes into place — and that frees you to enjoy today more fully.

Preplanning is about more than choosing a casket or a service date. It's about telling your story the way you want it told. Maybe you want a traditional service with hymns and prayers, or perhaps you imagine something more personal — a celebration with laughter, favorite music, and photo displays. You can choose readings that reflect your values, request a memorial slideshow of family moments, or even plan a gathering in a special location, like the garden you loved or the lake where you spent summers.

When you make those choices yourself, you shape a farewell that's as unique as the life you lived. It's your story — and you get to write the ending.

One of the most profound benefits of preplanning is the gift it gives to those you love. In the days following a loss, families face dozens of decisions, often under emotional strain and time pressure.

Without guidance, they may struggle with questions: Would Mom have wanted a burial or cremation? Did Dad prefer a small service or something larger?

By answering those questions in advance, you lift a tremendous burden from their shoulders. They can focus on what truly matters — comforting one another and celebrating your life — rather than worrying whether they're "getting it right." Many families describe a deep sense of relief when they know they're carrying out their loved one's wishes exactly as intended.

There's also a practical side to preplanning: it allows you to make financial decisions thoughtfully and ahead of time. Funeral costs can add unexpected stress for families, but preplanning gives you options — from setting aside funds to prepaying for services at today's prices. It's one more way to ensure your affairs are in order and your loved ones are protected.

Perhaps the most surprising thing about preplanning is how life-affirming it can be. Many people say they feel lighter, more at peace, and even more focused on enjoying life once their plans are in place. It often sparks meaningful conversations with children and grandchildren, giving you the chance to share memories, values, and wishes openly.



And with that important task checked off your list, you're free to focus on what truly matters: savoring the time you have, making new memories, and embracing each day without the shadow of uncertainty.

Preplanning isn't about preparing for death — it's about making the most of life. It's an act of love, a celebration of individuality, and a final gift of clarity and comfort to those you cherish most. By planning ahead, you ensure that your story ends the way it deserves to: with grace, purpose, and the same thoughtfulness that guided the rest of your life.

After all, living well doesn't stop at the end — it simply takes a different kind of planning.

FALL CREEK COMMONS

331 West Washington Avenue
Fall Creek, WI

One Bedroom Rental Assisted Apartment

For Persons Elderly,
Handicapped, or Disabled
Income-based, subsidized rent

Rent is 30% of monthly
adjusted income



715.834.3411

WI Veterans Home at Chippewa Falls

**Private Rooms
Fun & Engaging Activities
Tasty Culinary Experience
Therapy Services**



**Compassionate
& Professional
Skilled
Nursing Care**



Call 715-720-6775 to set up a tour of
our community!

2175 E Park Ave • Chippewa Falls • WisVets.com

Rajiv Puri CPA/PFS MBA

**HELPING YOU WITH FINANCIAL
PLANNING, MEDICARE SOLUTIONS
AND LONG TERM CARE NEEDS.**

All financial advisors are not created equal.

The Personal Financial Specialist (designation of AICPA) is more than a financial advisor: He is a CPA with the powerful combination of extensive tax expertise and comprehensive knowledge of financial planning. This knowledge is critical to obtaining the most valuable, objective advice possible.

All areas of financial and business succession planning - including estate, retirement, investments and insurance have tax implications, the PFS professional has the experience, ethics and expertise to get the job done right.



Contact Rajiv at:

239-643-6310

agency.puri@gmail.com

Home Care	Medicare Accepted	Medicaid Accepted	Private Pay Accepted	Long-Term Care Ins.	VA Payments	State Licensed	Wound Care	Home Modification	Home IV Care	Wound V.A.C.	Injection Care	Blood Draws	Private Duty	Durable Med. Supplies	No Age Limitation	Occupational Therapy	Physical Therapy	Speech Therapy	Respiratory Therapy
Appeal to Heaven 715-379-7889	No	No	Yes	Assist	No	No	Yes	No	Yes	Yes	Yes	Yes	No	No	Yes	No	No	No	No
Cornerstone Caregiving 534-444-9021	No	No	Yes	Yes	Yes	No	No	No	No	No	No	No	Yes	No	Yes	No	No	No	No
Village Caregiving 715-492-0191	No	Yes	Yes	Yes	Yes	Yes	No	No	No	No	No	No	No	No	Yes	No	No	No	No
Visiting Angels 715-598-1750	No	No	Yes	Yes	Yes	No	No	No	No	No	No	No	No	No	Yes	No	No	No	No

Total Care Services

LIVE YOUR LIFE IN YOUR OWN HOME

Assisted Living At Home | Personal Care
Supportive Care | Companionship/Dementia Support
Acute Care or Long Term Visiting Nurse | Hospice Adjunct

Appeal to Heaven Independent Nurses'
Network connects you with a trusted
professional nurse to keep you AT HOME,
INDEPENDENT, and IN CONTROL

appealtoheaven.net

appealtoheaven
Independent Nurses Network

Call or text 715.379.7889

715.834.3411 ext. 110



❖ *Dementia with Dignity* ❖

The Dementia Care Specialist Program (DCS) helps people living with Alzheimer's disease and related dementias and their care partners, learn about services and programs, live with dignity and security, and achieve maximum independence and quality of life. Dementia Care Specialist can also provide evidenced-based information on strategies you can implement to protect your brain as you age.

Dementia Care Specialists (DCS) are employed by Aging & Disability Resource Centers in select counties. Here's how to connect with your local DCS:

ADRC of Eau Claire County

www.eauclaireadrc.org

 facebook.com/ECC.ADRCC

 [@ADRCeau Claire](https://www.instagram.com/ADRCeau Claire)

 [Eau Claire County ADRC](https://www.youtube.com/Eau Claire County ADRC)

ADRC of Chippewa & Dunn County

www.co.chippewa.wi.us/adrc

www.co.dunn.wi.us/adrc

 facebook.com/ADRCChippewaCo

 facebook.com/groups/dementiacarechippewaco

EC: 715-839-4735 ❖ CF: 715-726-7777 ❖ Dunn: 715-232-4006

Assisted Living

*Chippewa County
**Barron County

	Type (AFH, RCAC, CBRF)	Monthly Cost Range	Subsidized	Private Units	Scheduled Transportation	Alzheimer's/ Memory Care	Respite Care	Call System	Diabetes Mgmt.	Rehab Services	24/7 On-Site Care	Nurse On-Site
Aggies Country Living 715-288-6333	CBRF	Call	No	Yes	Assist With	Yes	Yes	Yes	Yes	Yes	Yes	Yes
Apple Valley Home 715-835-5141	AFH	Call	No	Yes	Yes	No	No	Upon Request	Yes	Call for Rehab	Yes	No
Cambridge Senior Living 715-577-8418	CBRF	Call	No	Yes	Assist With	Yes	Call	Yes	Yes	Contracted	Yes	Yes
Caretta Senior Living - Assisted Living 715-317-5239	RCAC/ CBRF	Call	No	Yes	Yes	Yes	Yes	Yes	Yes	Contracted	Yes	Yes
Chippewa Manor Living Services* 715-723-4437	RCAC	Call	No	Yes	Assist with	No	No	Yes	Yes	Yes	Yes	Yes
Comforts of Home* 715-598-8031	RCAC	Call	No	Yes	Assist with	No	Yes	Yes	Yes	No	Yes	Yes
Dove Healthcare-Barron Assisted Living 715-537-1151	RCAC	Call	No	34	Yes	No	Yes	Yes	Yes	Yes	Yes	Yes
Dove Healthcare-Bloomer Assisted Living* 715-568-2716	RCAC	Call	No	24	Yes	No	Yes	Yes	Yes	Yes	Yes	Yes
Dove Healthcare - Orchard Hills Assisted Living 715-930-6000	CBRF	Call	No	40	Yes	No	Yes	Yes	Yes	Yes	Yes	Yes
Dove Healthcare-Osseo Assisted Living 715-597-2493	RCAC	Call	No	40	Yes	No	Yes	Yes	Yes	Yes	Yes	Yes
Dove Healthcare - Rutledge Home* 715-723-5566	CBRF	Call	No	42	Yes	Yes	Yes	Yes	Yes	Yes	Yes	Yes
Grace Edgewood 715-832-5813	CBRF	Call	Family care	Yes	Yes	Yes	Yes	Yes	Yes	Yes	Yes	Yes
Grace Prairie Point 715-598-7900	CBRF	Call	Family care	Yes	Yes	Yes	Yes	Yes	Yes	Yes	Yes	Yes
Grace Willowbrook 715-835-0429	RCAC	Call	Family care	Yes	Yes	No	Yes	Yes	Yes	Yes	Yes	Yes
HeatherWood Assisted Living 715-552-5511	RCAC	Call For Rates	No	31	Yes	Yes	Yes	Yes	Yes	Contracted	Yes	Yes
Heatherwood Memory Care "The Glen" 715-552-5511	CBRF	Call For Rates	No	8 Apts.	Yes	Yes	Yes	Yes	Yes	Contracted	Yes	Yes

Assisted Living

*Chippewa County
**Barron County

	Type (AFH, RCAC, CBRF)	Monthly Cost Range	Subsidized	Private Units	Scheduled Transportation	Alzheimer's/ Memory Care	Respite Care	Call System	Diabetes Mgmt.	Rehab Services	24/7 On-Site Care	Nurse On-Site
Lake Hallie Memory Care* 715-738-0011	CBRF	Call	No	60	Assist with	Yes	Yes	Yes	Yes	Contracted	Yes	Yes
Lakehouse Chippewa Falls* 715-201-4524	RCAC	Call	No	Yes	Yes	No	Yes	Yes	Yes	Yes	Yes	Yes
Meadowbrook at Bloomer* 715-568-2503	RCAC	Call For Rates	Yes	Yes	Assist with	No	Yes	Yes	Yes	Yes	Yes	Yes
Meadowbrook at Chetek** 715-924-4891	RCAC	Call For Rates	No	Yes	No	No	Yes	Yes	No	Yes	No	Yes
Oak Gardens Place 715-793-0205	RCAC	Call	No	Yes	Yes	No	Yes	Yes	Yes	Yes	Yes	Yes

The Helping Hands Guide does it's best to put together the most accurate information for these listings. Because business services change and prices vary throughout the year, we recommend that you call any business you are interested in getting information from before making any decisions. We tried our best to gather all of the information from each company and to the best of our ability is up-to-date as of January 2026.

• ASSISTED LIVING FACILITIES •

CBRF (Community-Based Residential Facility) and **RCAC** (Residential Care Apartment Complex) are Wisconsin assisted living types differing mainly by care level and living space: CBRFs offer more hands-on care (including up to 3 hours skilled nursing/wk) in a shared/room setting with 24/7 staff, suited for higher needs; RCACs provide private apartments with kitchenettes for more independent seniors needing less support (up to 28 hours care/wk), fostering independence with more autonomy.

Community-Based Residential Facility (CBRF)

- **Living:** Private or shared rooms with common areas.
- **Care:** Higher level; 24/7 staff, supervision, medication management, assistance with all ADLs (bathing, dressing), up to 3 hours of skilled nursing weekly.
- **Ideal For:** Moderate to high care needs, including dementia/memory care.



Residential Care Apartment Complex (RCAC)

- **Living:** Private apartments with kitchens/kitchenettes, living areas, private baths.
- **Care:** Moderate support; up to 28 hours of personal/nursing services weekly, focuses on independence.
- **Ideal For:** Independent seniors needing occasional help, promoting autonomy.

Key Differences Summarized

- **Independence vs. Support:** RCACs lean toward independence; CBRFs offer more dependence with comprehensive care.
- **Housing:** RCACs are apartments; CBRFs are rooms.
- **Staff/Care:** CBRFs have 24/7 staff and higher care limits (including skilled nursing); RCACs provide less intensive, scheduled support.

Adult Family Homes — where 3 or 4 adults who are not related to the operator reside and receive care, treatment or services that are above the level of room and board. May include up to 7 hours per week of nursing care per resident.

Sources: charterofwestbend.com & frontidaseniorliving.com

I don't even know where to start.

If you've ever felt this way while trying to navigate senior care, you're not alone. So many families come to us overwhelmed, unsure, and trying to make the right decision for someone they love.

That's exactly where Assisted Living Advisors steps in.

We walk beside you through every step – explaining your options, reviewing care needs, setting up tours, asking the right questions, and advocating for you or your loved one from start to finish.

And the best part? We offer FREE Services for you and your family!

Let us make this journey clearer, calmer, and so much easier.

SENIOR CARE OPTIONS:

- ✓ HOME HEALTH SERVICES
- ✓ RESPITE SERVICES
- ✓ SENIOR APARTMENTS
- ✓ ASSISTED LIVING
- ✓ MEMORY CARE
- ✓ HOSPICE
- ✓ VETERAN'S BENEFITS
- ✓ ELDER LAW ATTORNEYS
- ✓ SKILLED NURSING FACILITY



You don't have to do this alone.

Call or message us to get started today.

**ASSISTED LIVING**
Advisors
SENIOR CARE SOLUTIONS

 **(715) 210-4066**

 **assistedadvisors.com**

 **jswanson@assistedadvisors.com**



COMPREHENSIVE RETIREMENT PLANNING

Retirement Income Solutions
Health Insurance & Medicare Plans
Tax Strategies | 401(k) Rollovers
Employer-Sponsored Retirement Plans
Investment Management | Estate Plans



Schedule a complimentary consultation today!
715.355.4445 | RetireWithBuska.com

Advisory services are offered through Buska Wealth Management, LLC, an SEC Investment Advisor. Insurance products and services are offered through Buska Retirement Solutions, Inc., an affiliated company. Tax services are offered through Legacy Tax Solutions, LLC, an affiliated company.

St. John's Apartments



715-834-6302

Request an application or
schedule a showing.

**815 Chapin Street
Eau Claire, WI**



Rent is 30%
of adjusted
income through
HUD section 8



*Plan your memorial.
Preserve your legacy.*

Planning your memorial in advance ensures you are remembered exactly the way you want. Decisions you make today will reduce the emotional and financial strain your family experiences in their grief.

Plan ahead. It's what's best for everybody.



*A lasting
tribute
to life*



Lifetime Memorials
A Lasting Tribute To Life

2228 East Ridge Center
Eau Claire

715.830.5099

lifetimememorials-ec.com

PARK TOWER Independent Living Apartments

HUD subsidized rent for persons 55 or over experiencing low income
OR persons with a disability.

- Income based rents
- No asset limits
- Rents based on 30% of income
- Heat, garbage, water and sewer included
- Tenant driven activities
- Community room
- On-site beauty salon
- On-site manager & maintenance
- Coin-operated laundry facilities
- Bus stop nearby
- Card access security entrances
- Off street private parking
- Vending machines
- Pets allowed with restrictions

Tours available –
Call for an appointment
(715) 839-8602



PARK TOWER APARTMENTS

**901 South Farwell Street
Eau Claire**

For applications, contact the
Housing Authority of the City of
Eau Claire (715) 839-4943

Handicapped accessible apartments available.



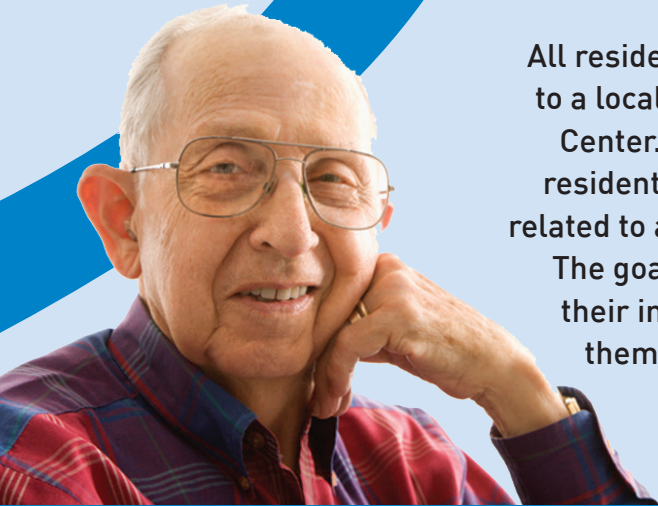
Rehab and Skilled Nursing

	Total Beds	Medicare	Medicaid	Daily Cost Range	Respite Care	Hospice Contract	Respiratory Care	IV Therapy	Palliative/End-of-Life Care	Transportation Services
Chippewa Manor Nursing & Rehabilitation 715-723-4437	50	Yes	Yes	Call	Yes	Yes	Yes	Yes	Yes	Yes
Cornell Health Services 715-239-6288	50	Yes	Yes	Call	Yes	Yes	Yes	Yes	Yes	Yes
Dove Healthcare-Bloomer 715-568-9770	50	Yes	Yes	Call	Yes	Yes	Yes	Yes	Yes	Yes
Dove Healthcare-Osseo 715-597-2493	40	Yes	Yes	Call	Yes	Yes	Yes	Yes	Yes	Yes
Dove Healthcare-Rice Lake 715-234-2604	50	Yes	Yes	Call	Yes	Yes	Yes	Yes	Yes	Yes
Dove Healthcare-South Eau Claire 715-552-1035	50	Yes	Yes	Call	Yes	Yes	Yes	Yes	Yes	Yes
Dove Healthcare-West Eau Claire 715-552-1030	70	Yes	Yes	Call	Yes	Yes	Yes	Yes	Yes	Yes
Dove Healthcare- Regional Vent Center 715-723-9341	31	Yes	Yes	Call	Yes	Yes	Yes	Yes	Yes	Yes
Grace River Pines 715-598-7900	50	Yes	Yes	Call	Yes	Yes	Yes	Yes	Yes	Yes
Wisconsin Veterans Home at Chippewa Falls 715-720-6775	72	Yes	Yes	Call	Call	Yes	Yes	Yes	Yes	Yes

The Helping Hands Guide does its best to put together the most accurate information for these listings. Because business services change and prices vary throughout the year, we recommend that you call any business you are interested in getting information from before making any decisions. We tried our best to gather all of the information from each company and to the best of our ability is up-to-date as of January 2026.



The information you need for the life you want.



All residents of Wisconsin have access to a local Aging & Disability Resource Center. ADRC's provide Wisconsin residents with unbiased information related to aging or living with a disability. The goal is to help people maintain their independence by connecting them with the right resources.



www.dhs.wisconsin.gov/adrc

Contact us for a free, confidential consultation to get unbiased information about local resources for individuals ages 60+, and adults with disabilities.

ADRC of Chippewa County 715-726-7777
ADRC of Eau Claire County 715-839-4735

We welcome everyone to the ADRC, regardless of race, age, color, national origin, ethnic background, disability, sexual orientation, gender, gender identity, or socioeconomic, marital or military status. Your ADRC respects the diversity of our customers, employees, and communities.



Put more life into your *Lifestyle!*

Vist us to learn more about

THE HERITAGE DIFFERENCE



Featuring:

- Impressive staff longevity
- 2 full time nurses
- Locally owned and operated
- A true sense of community
- Heritage exclusive events
- Nurse Practitioner onsite visits
- Physical, Occupational, and Speech therapy onsite
- Advanced Technology in Memory Care
 - Smart toilet
 - Radar fall detection



Contact for a tour!

HERITAGE
AT OAKWOOD HILLS

715-831-9118
3706 Damon St., Eau Claire, WI 54701
heritagesenior.com/oakwood-hills

HERITAGE
COURT

715-831-8200
3515 E. Hamilton Ave., Eau Claire, WI 54701
heritagesenior.com/heritage-court-eau-claire



MEADOWBROOK Senior Living of Bloomer

CALL NOW TO
SCHEDULE A TOUR!
(715) 383-5597

**Fully Furnished &
Move-in Ready One-
Bedroom Apartments!**

- 2 LED TVs
- Couch & Recliner
- Keurig Coffee Maker
- Echo Show
- Memory Foam Bed & Comforter
- Spacious Living Apartment
- And so much more!



1840 Priddy Street | Bloomer, WI 54724



COLONY PARK WEST

2818 Augusta Street
840 West MacArthur Avenue
841 Richard Drive



- One bedroom HUD Section 8 rental assisted apartments for persons 62+ or persons with handicap or disability.
- One bedroom apartments with range and refrigerator.
- Rent is 30% of monthly adjusted income including all utilities except telephone and cable TV.



715.834.3411 ext. 113

COLONY PARK EAST

Stein Boulevard
Steven Lane
Augusta Street



ACADEMY FOR LIFELONG LEARNERS

June 2, 2026

A fun day of education, resources, and social connection. Don't miss it!

University of Wisconsin
Eau Claire
Continuing Education

REGISTRATION OPENS MARCH 2

uwec.ly/HelpingHands26



WE TAILOR OUR PHARMACY SERVICES TO MEET YOUR NEEDS

- 24/7 on-call coverage including holidays
- Complimentary, dependable deliveries
- Variety of medication packaging options
- Monthly MARs
- EMAR compatibility
- On-site flu shots at your facility
- Chart reviews and general consult available
- State approved training available for staff



LTC Rx is locally owned and operated.

**13 E. SPRUCE STREET - CHIPPEWA FALLS
715.861.4422**

Friends at the Lake

by Laurie Van Beek, Director of Friends at the Lake

Friends at the Lake operates under the Respite for All (RFA) faith-based volunteer model of care, which differs from other respite models by addressing isolation, meaning, and purpose. Our mission, at Friends at the Lake, is to fill the participants with identity, connection, security, autonomy, meaning, growth, and joy. The program emphasizes creating an environment where all participants are valued, and the distinction between volunteers and those receiving services is minimized. Daphne Johnson, Executive Director of Respite for All Foundation, states, "The Respite for All model is a way of responding to dementia that brings fresh resources and renewed hope – a truly holistic approach unlike anything out there."

Friends at the Lake is held at Lake Street United Methodist Church, located at 337 Lake Street in Eau Claire, Wisconsin. The program currently operates on Tuesdays from 10:00 am to 2:00 pm. Caregivers may bring a loved one living with dementia to the church and are then able to attend to personal matters or appointments during the four-hour session. Participants engage



in a range of activities and are provided with a family-style lunch in a supportive social setting. At 2:00 pm, caregivers return for pick-up, frequently greeted by positive feedback regarding the participant's experience and enjoyment of the day's activities.

Friends at the Lake follows a social model of care.

Volunteers receive training focused on the social and relational aspects of supporting individuals with dementia, providing opportunities for mental stimulation and social interaction through relationship building. During Friends at the Lake, participants engage in organized music sessions, cognitive development exercises, physical activities, and art programs within a dynamic community setting. These activities foster shared experiences, promote social interaction, and facilitate the formation of new relationships.

If you are interested in learning more and would like to join our program or if you are interested in volunteering your time please contact Laurie Van Beek, 715-832-6603 or laurievb@lakestreetumc.org

**CORNELL**
HEALTH SERVICES

The right choice

- Flexible visitation for loved ones
- Physical, occupational & speech therapy 7 days a week
- Concierge services

Our residents have the opportunity to be a partner in the care they receive, to develop trusting relationships with our caregivers, and to reach their highest level of independence.



We are passionate about making our center The Right Choice for you or your loved one.

320 N 7th Street, Cornell | 715-239-6288 | cornellhs.com

Lenmark-Gomsrud-Linn

FUNERAL & CREMATION SERVICES



814 First Ave | Eau Claire
715-832-8301

1405 N. Clairemont Ave | Eau Claire
715-834-4456

lenmarkfh.com

Providing on-site cremation



Our Special Needs Trusts help preserve the assets of people with disabilities without endangering their eligibility for public benefits. For information on setting up a Wispack Trust use our Contact Us Form at wispack.org/contact-us/

LIVING BEYOND LIMITATIONS



Madison, WI
(608) 268-6006
wispack.org



GROSSKOPF & BURCH
 LAW FIRM



Helping individuals and families protect, preserve, and pass their legacy to the next generation

We focus our practice on estate planning, elder law, and probate and trust administration in order to provide expertise and high quality legal services to individuals and families



GROSSKOPF & BURCH LAW FIRM
 TRUST EXPERIENCE

Call us today
715-835-6196

1324 W. Clairemone Ave., Suite 10
 Eau Claire, WI 54701
 Fax: 715-835-1882
info@eclawyers.com

www.eclawyers.com

Our Services

- Elder Law
- Estate Planning
- Probate & Trust Administration
- Special Needs Trusts

TRUST EXPERIENCE



LOCALLY CRAFTED SINCE 1917
 Between Eau Claire & Chippewa Falls

Plan your memorial.
Preserve your legacy.

Planning your memorial in advance ensures you are remembered exactly the way you want. Decisions you make today will reduce the emotional and financial strain your family experiences in their grief.

Plan ahead. It's what's best for everybody.

Turn your memories into a lasting memorial



715.723.5576 **johnsonmonument.com**

SIMPLY ELEGANT, SIMPLY TIMELESS, SIMPLY PRICED

www.chippewamanor.com

Chippewa Manor

Residential Living



756 Irvine St., Chippewa Falls, WI

Senior Apartments & Flexible Assisted Living

- ▶ Flex on/off Assisted Living Services from month to month as needed
- ▶ Spacious 1- and 2-bedroom apartment options
- ▶ Stove/oven, full-size refrigerator in every apartment
- ▶ Convenient location (near HWY 53 bypass)
- ▶ Access to an on-campus Registered Nurse 24/7
- ▶ Restaurant-style meals with room-service available
- ▶ Full-time concierge to assist tenants and families
- ▶ Large chapel and professional salon with chaplain and cosmetologist available daily
- ▶ Active community - daily activity options

Start your family's search for peace of mind senior living today!

Scan the QR code or visit our website for a 3-D virtual apartment tour!



For more info or to schedule a private tour call (715) 723-4437.

Lake Hallie Memory Care

A happier life for everyone...



*Celebrating 12 Years
of Exceptional Care*

NOW HIRING!



715-738-0011



@MemoryCarePartners



Virtual tour available at:
LakeHallieMemoryCare.com



**LIMITED
OPENINGS!**

SKILLED ASSISTED LIVING

- EAU CLAIRE, WI -



No matter what stage of life you're in, Cambridge Senior Living has the flexibility to fit your lifestyle! Age in place with us & enjoy these fantastic amenities & more:

- Studio-style floor plans all with Private Bathrooms
 - Kitchenette options
 - Companion suite options
- Fun & exciting activity calendar offering:
 - Weekly live music
 - Weekly exercise programs
- In-house theater
- On-site salon & spa
- Beautiful views
- Secured courtyard
- Laundry & housekeeping
- 24/7 on-site staff
- Full-time Registered Nurse on-site
- Chef-prepared meals
- Availability for in-house:
 - Primary care visits
 - Podiatry services
 - OT/PT/ST/RN visits
 - Lab service



CALL TO SCHEDULE A TOUR!
715.577.8418



**CAMBRIDGE
SENIOR LIVING**
www.cambridge.care

FIND US ONLINE

